



MID-OHIO ENERGY COOPERATIVE, INC.

A Touchstone Energy® Cooperative 

www.midohioenergy.com

Bill Pay- Kenton or Marion office, by mail or online.



Board of Trustees

Eugene Royer.....Chairman
Daniel Harris.....Vice Chairman
Don Bumgarner.....Secretary
Richard Kritzler.....Treasurer

Robert Imbody.....Trustee
Gene McCluer.....Trustee
Karl Marshall.....Trustee
Max Strine.....Trustee
John Thiel.....Trustee

Employee Team

John Metcalf.....President & CEO
Mark Terrill.....Dir. of Operations
Gary Baker.....Dir. of Finance & Admin.
Don Fleming.....Accountant
Brent Burggraf.....IT Mgr./Office Mgr.
Tim Street.....Dir. of Comm. & Mbr. Ser.
Brian Barger.....Mgr. of Special Projects
Tracy Daughenbaugh...Operations Sup.,
Kenton
Gary Vanderhoff.....Operations Sup.,
Marion
Barry Boes.....Lead Lineman, Marion
Don Doersam.....Lead Lineman, Kenton

Line Crew

Kent Driskill	Aaron Newland
Casey Ledley	Todd Phillips
Dan Lucas	Jared Robinson
Kip Luikart	Aric Stover
Chris Napier	

Office Crew

Carol Emptage	Karen Sutherland
Kim Middleton	Kerri Turner
Kathy Sherman	

Office Hours:

8 a.m. to 5 p.m., Mon. - Fri.

Kenton office: 419-673-7289
555 West Franklin St., P.O. Box 224
Kenton, OH 43326-0224

Marion office: 740-382-1234
2859 Marion-Upper Sandusky Rd.
Marion, OH 43302-9303

Report Outages: 888-363-6446
Daytime Toll Free: 888-382-6732



Room for savings in your attic?

Is there enough insulation in your attic? By adding insulation, you can improve your home's energy efficiency and save money.

With adequate attic insulation, your home's heating/cooling system will operate more efficiently. It will keep you cooler in the summer and warmer in winter — and it will keep more money in your wallet. As TogetherWeSave.com has shown, adding insulation to your attic can result in significant savings.

Older homes tend to have less attic insulation than newer ones. A home energy audit can indicate whether additional insulation is needed. Energy audits are available from the cooperative at a cost of \$50. The cost is fully reimbursable with proof of energy-efficiency purchases.



Before adding insulation to your attic, determine how much insulation is already installed, what kind it is and how thick it is. Next, you'll need to know the R-value — which indicates the insulation's resistance to heat — of existing attic insulation.

The higher the R-value, the greater the insulating effectiveness. Once you know the R-value, you can determine how much insulation to add. For Mid-Ohio Energy's territory, the recommended R-value for attic insulation is R-49.

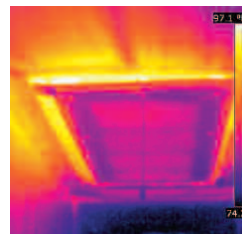
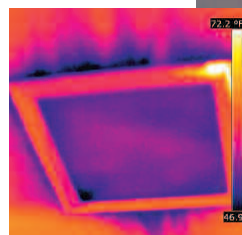
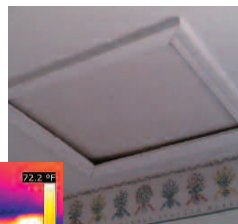
Now you're ready to decide what kind of insulation to install: loose-fill or blanket (batt and roll) insulation. Loose-fill insulation consists of small particles of fiber, foam or other materials. Blanket insulation, the most common and widely available type of insulation, comes in the form of batts and rolls made from mineral wool, plastic fibers and natural fibers. Loose-fill insulation is usually less expensive to install than batt insulation. And when installed properly, loose-fill insulation can provide better coverage.

ENERGY AUDIT CASE STUDY: ATTIC ACCESS

A common problem encountered during energy audits is an attic access that is poorly sealed or uninsulated. During the winter months, this means that the air that you have paid to heat your home can easily escape into your attic.

To eliminate this problem, make sure the access door makes a tight seal. Use weatherstripping around the top frame of the access. Insulate the access by cutting a piece of fiberglass or foam board insulation to the size of the access and attaching it to the access cover.

Pre-made insulated attic stair covers can be found at home improvement stores.



Infrared images show unconditioned air entering living space through improperly sealed attic access doors during an energy audit. During extreme conditions, this unconditioned air can be very cold or in excess of 100 degrees.

Copper theft costs everyone

Soaring metal prices have been blamed for an increase in thefts of copper and aluminum, primary components of electric distribution lines. Recent thefts of copper wire and equipment from electric utilities have been responsible for power outages, additional maintenance and expenses, diminished service reliability, and, in some cases, serious injury or death.

Copper in wire is appealing to thieves who want to sell the metal for scrap. Burglars will often climb power poles, scale fences and break into buildings to steal the precious metal. Needless to say, a 542 percent increase in the price of copper since 2001 has prompted thieves to become bolder and more inventive.

Mid-Ohio Energy has experienced several break-ins at our pole yards in which thieves were after scrap copper. These break-ins have cost the cooperative more money to fix the chain link fence than the loss of the small amount of copper. Another issue facing the cooperative is the theft of our ground wires on our poles. The ground wire on the pole is crucial during storms because it protects the system from lightning. During summer storms this past July, the cooperative's linemen were busy replacing utility poles that were severely damaged by lightning. Each pole that was replaced had the ground wire removed.

In Oklahoma, members of one electric co-op

are facing an estimated \$1 million repair bill because copper thieves wrecked a substation for just \$100 worth of the metal last year. In New Mexico, a man was found dead beneath a power pole, electrocuted while trying to cut copper wiring from a live transformer. A Texas man lost his life when he cut into a live power line while trying to steal copper. Similar accidents have been reported across the country.

"To a would-be thief, stealing copper may seem like a quick way to make a buck," says Mark Terrill, director of Operations. "But it's illegal, it's costly, and it's not worth a life. Working with any metal and electricity is a dangerous combination, even for trained employees using proper equipment."

Please help us prevent these thefts. If you notice anything unusual, call Mid-Ohio Energy immediately at 888-382-6732. If you see anyone other than co-op personnel or contractors around substations or other electric facilities, call the police.



Lightning damage caused to pole where copper ground wire was stolen.

Mid-Ohio Energy urges you to adhere to the following guidelines to guard against electrical dangers and prevent copper theft:

- Never enter or touch equipment inside a substation; stay away from power lines and anything touching a power line.
- If you notice anything unusual with electric facilities, such as an open substation gate, open equipment, or hanging wire, contact your electric co-op immediately.
- If you see anyone around electric substations or electric facilities other than co-op personnel or contractors, call the police.
- Install motion-sensor lights on the outside of your house and business to deter possible thieves.
- Store tools and wire cutters in a secure location, and never leave them out while you are away.
- If you work in construction, do not leave any wires or plumbing unattended or leave loose wire at the job site, especially overnight.
- Help spread the word about the deadly consequences that can result from trying to steal copper or aluminum.

Keep kids safe around electricity

Mid-Ohio Energy is looking to share the message of electric line safety with students. Our traveling electric line demonstration is a great way for students to learn the potential dangers of live power lines. Presentations can be tailored to specific age groups. Whether its climbing trees or flying a kite, the demo stresses the importance of staying away from electric lines. To schedule a safety demonstration please call our offices.

Other safety resources can be found in our offices and online at our website.

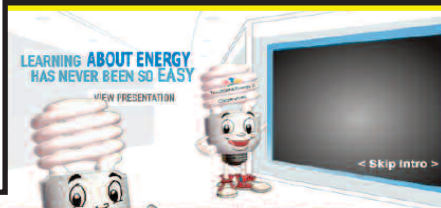
KIDS SAFETY GETS INTERACTIVE

Access safety games and materials for kids from our homepage at www.midohioenergy.com. The sites also feature teacher resources.

Touchstone Energy Kids Zone



www.kidsenergyzone.com



to the Touchstone Energy Kids Zone, a complete resource for learning about electricity, energy savings and electrical safety. Energy is everywhere! Every time you watch television or turn on a light you are using electricity.

Here at the Touchstone Energy Kids Zone we have fun games and activities that will help you learn about energy and energy efficiency. Information you can share with your family and friends.

ENERGY SAVING TIPS
Click to learn more



RENEWABLE ENERGY
Watch and enjoy



FUN AND GAMES
Play and learn



Kids Korner

Why We Need Energy
A Brief History of Energy
Energy Conservation
Power Source
Types of Energy
Energy & Environment
Let's Explore Energy
Play It Safe!
Energy Efficiency
Energy Fun Factory
Glossary
Teacher Feature



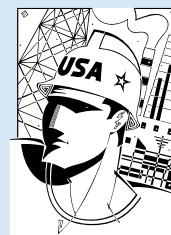
Lineman Eric Stover draws an arc from the co-op's live line display. This safety demonstration is available to schools. Safety presentations can be designed to fit any age group.

OFFICE CLOSING DATE

Mid-Ohio Energy honors those who work to bring you reliable electric service at a reasonable rate. Our offices will be closed on

Monday, Sept. 5

to give our laborers a day to relax with friends and family. Deposit boxes are available at our offices to make payments.



Emergency service is available 24 hours a day.

Call our outage hotline at **1-888-363-6446**

Rebates available for water heaters, heat pumps

Mid-Ohio Energy Cooperative offers incentives for members to make energy efficiency upgrades to water heaters and heating/cooling systems. Rebates are available in the form of an energy credit applied directly to your account. The cooperative currently offers rebates on the following items:

WATER HEATERS: UP TO \$200 ENERGY CREDIT



An efficient and well-insulated water heater keeps plenty of hot water readily available with little energy used to store the hot water. Members are eligible for an energy credit of up to half the purchase price (not to exceed \$200), on new water heater purchases. New homes are eligible for a rebate up to \$500. New water heaters must meet this following requirements:

- Capacity of 50 gallons or more
- Element wattage must be 4,500 watts or less
- A warranty of 9 or more years
- Have a radio-controlled switch installed on the unit

HEAT PUMPS: \$400 ENERGY CREDIT



By moving heat in the air to a desired destination, a heat pump provides a convenient option for both heating and cooling. New heat pump installations are eligible for a \$400 energy credit. A radio-controlled switch (RCS) will be provided by the cooperative to be installed by the new unit's contractor.

GEOHERMAL: \$400 ENERGY CREDIT



Use the earth's heat to your advantage. A geothermal unit is one of the most efficient and environmentally-friendly forms of heating/cooling. New geothermal installations are eligible for a \$400 energy credit from Mid-Ohio Energy. A radio-controlled switch (RCS) will be provided by the cooperative to be installed by the new unit's contractor.

A radio-controlled switch (RCS) is designed to help the cooperative reduce overall system load during times of peak demand. Load control occurs less than 1 percent of the hours in the year.



CHECK FOR AVAILABLE TAX CREDITS

Make the most of your energy-efficient upgrades by taking advantage of available tax credits.

Check for tax credits and qualifications online at: www.energystar.gov/taxcredits

New offers added to Co-op Connections Card

The Co-op Connections® Card can be used at a variety of local and national businesses. Mid-Ohio Energy would like to thank local businesses for extending savings to our members. Recently, two new local discounts were added to the list of participating businesses. New businesses can join at anytime, contact our offices if your business would like to participate in the Co-op Connections program.

The Co-op Connections program is free to all members of Mid-Ohio Energy. Replacement cards are available for those who have lost or have not received a card.

To see all participating businesses, click the Co-op Connections Card logo on our website at www.midohioenergy.com.



\$ 30,597.⁵⁷

Total saved by members using the Co-op Connections prescription discount.

NEW DISCOUNTS



LUIKART PHOTOGRAPHY - 10 PERCENT OFF SITTING FEE

Fine art photographer that loves the creative side of photography. Luikart Photography's pictures are unique, creative and captured to fit each individual personality. Specializing in newborns, children, family portraits, engagement pictures and senior pictures. Contact today to set up your appointment! Located in Larue.

419-310-1677

Visit online at www.luikartphotography.zenfolio.com



DOGGY INDULGENCE - 10 PERCENT OFF NEXT GROOMING SERVICE

Doggy Indulgence is a full service dog grooming salon. "Soak your cares away" by giving your pet the pampering they deserve.

1757 C.R. 59

Caledonia, OH 43314

740-341-7353

Senator Portman representative visits co-op office

John Campbell, Central District Director for Sen. Rob Portman's office, visited with cooperative personnel as he made his rounds throughout the 15 counties which he covers for the Senator. Campbell made the stop to learn about the business of electric distribution and extend a listening ear to concerns that affect the co-op and its members on the national level.

Mid-Ohio Energy Cooperative President & CEO John Metcalf demonstrated how the co-op uses technology to improve the performance of its distribution operations. Metcalf also discussed the U.S. EPA and the impact that upcoming regulations could have on member-owners. Campbell explained that Sen. Portman was on the Senate Energy and Natural Resources Committee and that these regulations were definitely on his mind and agreed that they could be detrimental to the economy and the local energy sector. Mid-Ohio Energy appreciated the opportunity to discuss the electric cooperative model with Senator Portman's district director.



During a tour of the cooperative's operations room, John Metcalf (President/CEO of Mid-Ohio Energy) spoke to John Campbell (Central District Director for Senator Portman) about how advancements in technology have increased the cooperative's ability to provide dependable electric service.

How to become a trustee

Mid-Ohio Energy Cooperative is governed by a nine-member board of trustees. The board meets monthly to decide policies, review cooperative business and activities, and make decisions affecting the entire cooperative. The board also approves contracts, reviews all operations and financial statements and approves all payments of capital credits.

The cooperative's territory covers portions of 10 counties and is divided into nine districts. Each of the nine districts is represented by a board member.

Each year, three board members are elected by and from the membership to serve a three-year term. There is no limit to the number of terms a trustee can serve. The election of trustees takes place each year at the cooperative's annual meeting.

All trustees are members of the cooperative and must live in the district they represent. Trustees must not in any way be employed or financially interested in a competing enterprise or business selling electric energy or supplies to the cooperative, or business primarily engaged in selling electrical appliances, fixtures or supplies to cooperative members.

The election process begins when the board appoints a Nominating Committee at the August board meeting. The Nominating Committee is also made up of nine representatives, one from each district. The task of this committee is to select two representatives to be placed on the ballot for each district that is up for election.

This year's districts are 1, 2 and 3. Trustee Interest Cards will be mailed in October to all members residing in the districts up for re-election. Members who are interested in running for the board are instructed to complete and return the Trustee Interest Card to the cooperative's attorney.

Each interested member who sends in a Trustee Interest Card will then be mailed a Trustee Nomination Information Sheet to be mailed back to the cooperative's attorney by mid-December. In January, an orientation meeting will be held for all potential candidates. After that meeting the Nominating Committee will select two nominees for each district up for election to go before the whole membership at the April 10 Annual Meeting.

TIMELINE FOR TRUSTEE NOMINATIONS

Mid-December

Trustee Nomination Information Sheets mailed back

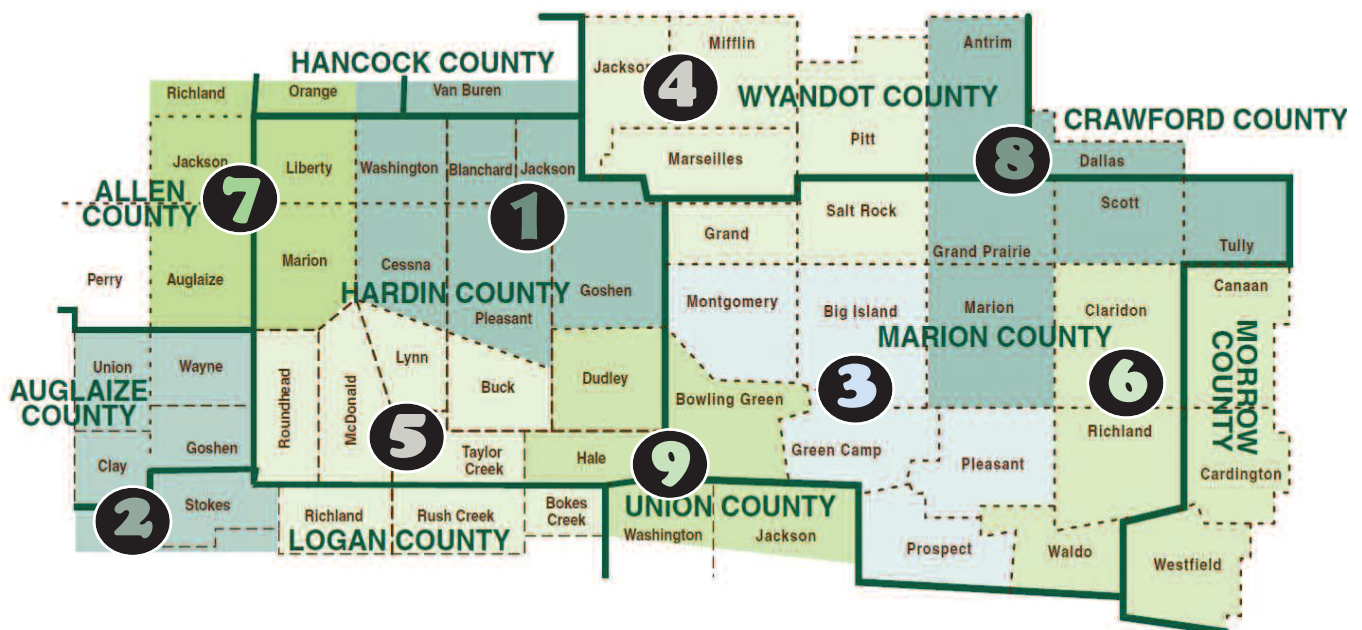
January

Orientation meeting for all potential candidates

Annual Meeting of Members in April

The nominating committee selects two candidates from each district to be voted upon by the membership

Mid-Ohio Energy's Trustee Districts



Each of the nine districts is represented by one member on the co-op's board of trustees. Districts 1, 2, and 3 are up for election at this year's Annual Meeting in April 2012.

Unclaimed capital patronage

The following members have unclaimed capital that was declared in 2007. These amounts represent the members' share of margins that were generated by the cooperative during the years these people were living in the cooperatives' service areas and purchasing electricity from Mid-Ohio Energy Cooperative, Inc. (or formerly United Rural Electric or Marion Rural Electric). Attempts to reach these people by mail were returned because of incorrect or insufficient addresses. These names have appeared in *Country Living* magazine in 2007 and several times since then. As required by Mid-Ohio Energy's Code of Regulations, four years following the mailing of notices and 60 days after two consecutive notices in *Country Living* magazine, the unclaimed funds revert to the cooperative to be reallocated to patrons. **This is the second notice.**

ACHOR DANNIEL D
 ADA AIRPORT
 ADAMS CONNIE
 ADAMS DARLENE D
 ADAMS DONALD
 ADAMS DONALD R
 ADAMS DOUGLAS S
 ADAMS GERTRUDE E
 ADAMS JAMES W
 ADAMS JOANNE
 ADAMS JOHN
 ADAMS LEILA M
 ADAMS MARY K
 ADAMS RANDY
 ADAMS SUSAN
 ADCOCK JAMES A
 ADELES DANIEL
 AETNA INSURANCE
 AGNER LAURA
 AGRIESTI ANTHONY J
 AHMAY FRED
 AKERS CHESTER
 ALBERT HAROLD
 ALBERT PHILIP
 ALBERT PHILIP C
 ALBERT TODD
 ALBINACK JOE
 ALBORN PHILIP C
 ALBRIGHT BETSY
 ALBRIGHT CAROL S
 ALCORN JIM
 ALDRICH JEFF
 ALDRICH L'ANNIE
 ALDRIDGE MICHAEL A
 ALEXANDER JACK L
 ALLARD SHARON
 ALLEN BARRY W
 ALLEN C H
 ALLEN CHARLES L
 ALLEN ETHAN H
 ALLEN JERRY R
 ALLEN JESSICA
 ALLEN KELLY A
 ALLEN LESLIE
 ALLEN MARION
 ALLEN NERO
 ALLEN RICHARD O
 ALLER RODNEY F
 ALM VINCENT
 ALT GERALD R
 ALTHOUSE JERRY
 AMERICAN AGRI CHEMICAL
 AMES JIM A
 AMES SHARI L
 AMICK EDWARD
 AMOCO OIL CO
 AMRINE ROBERT
 AMWEG JUANITA
 ANDERSON JEFFREY E
 ANDERSON JEFFREY S
 ANDERSON JILL S
 ANDERSON MICHAEL J
 ANDREWS & CARLYLE CONST
 ANGEL CARL F
 ANGLES CHRISTIE
 ANSLEY JAMES
 ANSON BRENDA
 ANTHONY LES
 APTHORP DIANA K
 ARBOGAST SCOTTY
 ARCHABLE ROSCOE
 ARCHER L JEAN
 ARMBRUSTER LYNN
 ARMSTRONG DOUG
 ARNETT CHARLES R
 ARNOLD T M
 ARTHUR TIMOTHY L

ASHLAND EXPLORATION INC
 AULD RON
 AULT CARYL
 AULT SCARLETT
 AUTEN III DAVID K
 BACKUS ELIZABETH A
 BACOME EDWARD
 BADER SARA L
 BAER JOHN
 BAHNER GEORGE
 BAILEY BRIAN
 BAILEY HOWARD F
 BAILEY MICHAEL
 BAIRD FRED W
 BAIRD KIMBERLY
 BAISDEN RALPH H
 BAKER BRUCE H
 BAKER DENNIS
 BAKER HERBERT JR
 BAKER JR HERBERT
 BAKER KATHLEEN R
 BAKER KENNETH E
 BAKER LELETHEA
 BAKER LOWELL R
 BAKER WILLIAM
 BALDAUF CONST CO INC
 BALDAUF DALE
 BALDWIN DAVID
 BALDWIN FRED
 BALDWIN JAMES S
 BALDWIN MARY K
 BALDWIN RAY
 BALER JATROCOA
 BALES WILLIAM S
 BALL MAXINE
 BALL ORVILLE
 BALLARD JANE
 BALLENGER CHERYL A
 BALLINGER LORI
 BANKS DAVID L
 BANKS JONATHAN T
 BANKS WILLIAM
 BARKER JESS
 BARKLEY KEITH
 BARNHART CARSON
 BARNWELL JAMES R
 BAROT JODY
 BARREIRO CARMEN
 BARRY KEVEN
 BARTH MARGARET
 BARTLETT JAMES
 BARTLEY HOWARD R
 BARTON STEPHEN
 BARTZ HOWARD H
 BAUER TERRIE C
 BAUTISTA MARIA
 BAYLES JAMIE
 BAYLESS CAROLYN
 BAYLISS DOUGLAS
 BAZZY OMAR J
 BEACH DAN
 BEACHUM CARDELL
 BEAL ROBERT
 BEARDSLEY JIM
 BEATTY DAVID L
 BEENEY D J
 BEERS INDOE E
 BEERY LARRY WM
 BEERY MARK S
 BELL JEFFREY P
 BELL LEWIS S
 BELL LUELLA
 BELLAMY BEN W
 BELTZ ROBERT C
 BENDING DAN
 BENNETT & SIEG AUTO
 BENNETT DANA

BENTLEY JAMES E
 BENTLEY JOHN E
 BERG TIM
 BERGER JO A
 BERKSAN YURDANUR
 BERRY JR K
 BERRY PAMELLA S
 BERVAS MIKAEL
 BIBLER THEODORE E
 BIDWELL GARY E
 BILGER CATHY
 BILL LINA M
 BILLINGS BRIAN
 BILTZ ROBERT
 BIRCH PAUL M
 BIRD HAROLD J
 BISHOP CARLENE A
 BISHOP HARRY L
 BISHOP JOHN
 BISHOP REBA
 BLACK EARL C
 BLACK JAMES
 BLACK ROBERT E
 BLACK WILLIAM
 BLAIR DAVID
 BLANKENSHIP WAYNE
 BLANTON CHESTER
 BLANTON CHRISTINE
 BLASER DAVID H
 BLEVINS EDDIE R
 BLEVINS LAURA
 BLEVINS WILLIAM
 BLINN JACK E
 BLOOMFIELD RUSSELL
 BLUE DOROTHY
 BLUE J R
 BLUE J T
 BO MAR FARMS
 BOEDICKER BETTY J
 BOEKER ROY
 BOES ROBERT E
 BOGGS JOHN A
 BOGGS JOSH
 BOGGS JOYCE E
 BOGGS LEROY
 BOGGS VIRGINIA
 BOGGS WARREN L
 BOLANDER LARRY
 BOLDMAN VERNITA
 BOLENDER RUSSELL T
 BOLIN MATTHEW G
 BOLLER MIKE
 BOND CURTIS
 BOND ROBYN L
 BOOHER JOHN E
 BOPP DAVID
 BORDEN GARY
 BORN JACK R
 BORROR JAMES D
 BOSLEY ROBERT P
 BOSSERMAN RICHARD K

BOUTWELL DAVID
 BOWDLE STEVE
 BOWER DENNIS
 BOWER ERIC M
 BOWERS DAWN
 BOWLBY ALLAN
 BOWLING DON
 BOWLING PHILLIP
 BOWMAN EUGENE
 BOWMAN JOSH
 BOWMAN MATTHEW S
 BOWMAN RUSSELL W
 BOWMAN STACEY
 BOWMAN WAYNE D
 BOYD EUGENE
 BOYD GREGORY S
 BOYD JOHN A
 BOYD RICHARD O
 BOYER LEONARD L
 BOYER ROBERT L
 BRADLEY CHARLES N
 BRADLEY PATRICK O
 BRADY CARL
 BRAMMER KAREN S
 BRANHAM DAVID L
 BRASHEAR J E
 BRAY DONALD
 BRENEMAN PITSTICK SUE
 BREWER MARTHA L
 BREWER MAX
 BREWSTER AMY S
 BRICKER B M
 BRIDGES FLOYD A
 BRIGGS WANDA
 BROOKS DANNY W
 BROOKS KIMBERLY K
 BROOKS WILLIAM T
 BROUGHTON DONALD E
 BROWN BYRON
 BROWN CARL
 BROWN CHESTER D
 BROWN CLARENCE
 BROWN DAVID C
 BROWN DUSTIN R
 BROWN EDNA P
 BROWN HEIDI E
 BROWN JOSH A
 BROWN JR R
 BROWN MARILYN D
 BROWN MARY
 BROWN MRS DIANE
 BROWN PATRICIA L
 BROWN RICHARD ARTHUR
 BROWN ROBERT
 BROWN ROBERT J
 BROWN RONALD O
 BROWN SAM
 BROWN SR RUSSELL
 BRUGGEMAN ROBERT
 BRUMAGE STACEY
 BRUNER R C

BRYAN MICHELLE
 BRYAN STEVEN D
 BRYAN WARREN
 BRYANT MICHAEL E
 BRYANT RUSSELL
 BUCKINGHAM H F
 BUCKLAND JR D
 BUENTELLO ABRAHAM
 BUETTNER JR W
 BUHLER BRYAN
 BUHLER ROBERT
 BUIKEMA PAMELA
 BUNNELL WILLIAM G
 BURCH CHARLES R
 BURDICK R J
 BURGE RORY
 BURKE CALVIN E
 BURKEY MRS HARVEY
 BURLEY MARIE M
 BURNETT KINDRA
 BURNS CHARLES
 BURNS COLEN A
 BURREY SR T
 BURREY TOM
 BURRIS CAROL
 BURRIS CLIFFORD
 BUTLER DON
 BUTLER ELWOOD
 BUTLER ERNA
 BUTLER LARRY R
 BUTLER LOWELL
 BUTLER WILLIAM
 BUTTERMAN CYNTHIA K
 BUTTERMAN PENNY S
 BUTZ JERRY D
 BYRD NORA
 CABELL WILBUR W
 CADE SAM
 CAHILL BRUCE W
 CAIN RICHARD J
 CAINES JAMES
 CALDWELL JAMES C
 CALDWELL JOSEPH M
 CALDWELL MIKE
 CALDWELL ROBERT
 CALDWELL STEVE
 CALDWELL WILLIAM M
 CALLENTINE DANNY E
 CALVARY TABERNACLE
 CAMPBURN ROBERT M
 CAMPBELL DALE K
 CAMPBELL DOREEN
 CAMPBELL ELWYN W
 CAMPBELL JANET L
 CAMPBELL MICHAEL T
 CAMPBELL RITA
 CAMPBELL THURMAN
 CAMPBELL VIRGIL E
 CAMPBELL WINSTON A
 CAMPER LINDA
 CAMPER ROBERT A



Your electric service has an impact on the way you live. Get the latest news news and updates from Mid-Ohio Energy by following us online on Facebook and Twitter. Receive energy-saving tips, outage restoration updates, peak alerts and more!



Like us on Facebook at www.facebook.com/MidOhioEnergy
 Follow us on Twitter at www.twitter.com/MidOhioEnergy

CAMPERS HEPBURN
CANNODE KATHLEEN
CANNON WELLES
CANTRELL JOHN
CAPLIN GARY L
CARBO JERRY A
CAREY DANIEL
CARNAHAN MARL J
CARNEY TAMARA
CARPENTER DONALD
CARPENTER EDWIN
CARPENTER JOHN F
CARR CONLEY H
CARROLL CHERIE M
CARTER DON
CARTER MICHAEL L
CARTER ROBERT E
CARTER SYLVIA A
CARTWRIGHT ROBERT J
CARTY DARRELL R
CARY JR C
CASE PAT
CASEY TIMOTHY P JR
CASKEY HARVEY E
CASPERSON CASS
CASPERSON TERRY L
CASSELL DONALD D
CASSIDY TIMOTHY
CASTEEL RICHARD
CASTLE ELIZABETH
CASTLE FRANK
CASTLE JAMIE G
CATELLA MICHAEL B
CAUDILL LORA A
CENTEL CABLE
CHAFFIN STEVE
CHAIKEY KAREN M
CHAIKEY RICHARD B
CHALK KEVIN
CHAMBERLIN GARY
CHANCE GEORGE A
CHANEY LONNIE
CHAPMAN DORIS
CHAPMAN ERNEST
CHAPMAN RICHARD
CHARLES THOMAS S
CHENEY THOMAS
CHILES DAVID D
CHIPMAN CHARLES M
CHIVINGTON DOUG
CHIVINGTON J E
CHOKREFF PHIL
CHRIST MISSIONARY BAPT
CHRISTIAN CONSTANCE
CHRISTIAN DAMON
CHRISTIAN DENVER L
CHRISTIAN JACK L
CHURAN THOMAS J
CHURCH AJUSTI N
CHURCH OF CHRIST GOSP
CIRCLE H FARMS
CIRKO VIRGINIA L
CIVILS LINWOOD
CLARD BIRT
CLARK CARROLL
CLARK CHRISTOPH
CLARK DAVID
CLARK GREGORY M
CLARK HELEN
CLARK SHAWNA
CLARK SHERRY M
CLAY DARRELL
CLAY GARRY
CLEAVES DANIEL S
CLEMONS JERRY L
CLENENEN DANE
CLEVER WILMA J
CLINGER WILMA J
CLUFF HAZEL
CLUFF JEFF
CLUFF MICHAEL L
COCHERL DAN
COCHERL DONALD E
COCHRAN BIRGIS
COCHRAN PAUL
COCKRELL CARL W
COE CHRYSYAL
COFFEE BARRY
COFFMAN ENCARCION G
COGAN CARROLL
COKER DAVID A
COLBY MELVIN L
COLDWELL PEARL
COLE DONALD
COLE JESSE
COLE LARNEY F
COLE LYNETTE S

COLE MARLYN
COLE N C
COLE RANDY L
COLEMAN DAVID
COLEMAN JAMES
COLEMAN KATHRYN
COLEMAN LARRY M
COLLIER ROBERT
COLLINS ALLIE
COLLINS EULA
COLLINS GARY
COLLINS KENNETH F
COLLINS RICHARD
COLLINS VERNON C
COMBS ROBERT A
COMLY FRENCH BRUCE
COMPTON JAMES
CONKLIN RICHARD
CONLEY DEB
CONLEY ELIZABETH J
CONLEY ERNEST
CONLEY JR R
CONLEY PRESTON
CONLEY ROSE ANN
CONNER DAVID
CONNER RETHA L
CONNERS PAMELA S
CONOVER TIM J
CONRAD RONALD E
CONTE SR PAUL A
COOK BRIAN R
COOK JANET
COOLEY ROBERT
COOLEY THEODORE
COOLIDGE DENNIS
COON JR GEORGE L
COONS NORMA J
COOPER BENJAMIN H
COOPER JERRY L
COOPER LLOYD E
COOPER MIKE
COOPER WILLIAM
COPE ROBERT
COPELAND GARY M
COPELAND JON A
COPPLER GEORGE
CORBITT JAMES W
CORNELIUS LINDA
CORNELIUS WILBUR E
CORSO DANIEL A
COST MATT
COTTRELL JOE
COUCH THOMAS
COULTER JOHN A
COX EMMA
COY DAVID
COY JANET LEE
COY JOHN C
COYKENDALL RICHARD
CRABTREE DAVID
CRABTREE TERRY
CRAFT DANE
CRAIG DEAN
CRAIG LOUISE
CRAIG RUSSELL J
CRAMER AMY J
CRAMER DENVER M
CRAMER MABEL
CRAMNER HERMAN L
CRANSTON DONALD
CRAWFORD DON
CRAYCRAFT BRENDA L
CRAYCRAFT JR P
CREIGHTON GENE W
CRESS VINAL
CRESSE RHONDA
CRIDER RICHARD
CRISP MIKE
CRISWELL DWIGHT
CRISWELL SYLVIA
CROOKS STEVE L
CROPMATE CO
CROSS TED
CROWE JAMES
CROWNHART IRWIN
CROWTHER CONSTANCE
CRUMP DALE L
CRUMP HERBERT
CRUTCHER DON B
CUBER JOHN
CULVER ANDREW P
CULVER LARRY
CUMMINGS BRIAN
CUNNINGHAM DOROTHY M
CUNNINGHAM JEFFREY A
CURL LYLE
CURRENT DON D

CURRY VICTORIA J
CURTISS FLOYD
DACHEN RONALD
DAILEY ANNETTE K
DAILY KIM
DALTON JOHN
DALY KENNETH
DAMRON WILLIS D
DANIEL GLENN
DANIEL ODELL
DANIELS DONALD E
DANIELS MICHAEL W
DARLAND CAROL J
DAUGHERTY TOM
DAUM ZOLA
DAVIDHIZAR PATSY
DAVIDS CHARLES
DAVIDSON DUEL
DAVIDSON JAMES R
DAVIS ANDREW
DAVIS BETTY R
DAVIS CHARLENE
DAVIS CHARLOTTE
DAVIS DAN R
DAVIS EVAN M
DAVIS GARY
DAVIS JAMES A
DAVIS JENNIFER E
DAVIS JOHN
DAVIS L L
DAVIS MARILYN
DAVIS MARVIN
DAVIS STEPHEN C
DAWSON HOPE
DAWSON JAMES E
DAWSON JEFFREY W
DAWSON SR JAMES D
DEAN DANIEL L
DEAN HOWARD
DEAR DARREL
DEARTH GREGORY L
DEBOLT TIM M
DEBRUIN BRIAN R
DECK EDITH
DECKER ANGELA G
DECKER JACK STEVEN
DECKLING WILLIAM R
DEGLER JASON
DENHART JAMES R
DENMAN DAVID P
DENNEY RAY P
DENNIS ARTHUR R
DENNIS GARY
DENNIS LARRY W
DENNIS PHILLIP G
DENNISON THOMAS D
DERR DEBRA S
DERSHEN SHANE
DETTY LORETTA
DETWEILER MARY
DETZLER LEON C
DEWALT PATRICIA A
DIALS ORVILLE
DIBLE ROBERT D
DICKERSON TERRY L
DICKEY EVA
DIERKES JOHN D
DILLINGER JERRY D
DILLINGER JOHN
DILLON WILLIAM A
DILTS JAMES W
DIMENSION CABLE SERV
DIXON CATHY J
DIXON JR R
DIXON RANDY
DIXON ROBERT A
DODDS DEBRA S
DOERMAN GEORGE H
DOERNER DONALD
DOLICK JEFF
DOLL BARBARA
DONATHAN EDWI N
DOOLEY JOHN E
DOOLITTLE ESTHER
DOOLITTLE IRENE
DOONAN RICHARD M
DORN JOHN W
DOSS DAVID L
DOSS DONALD
DOTSON DELBERT
DOTSON GARY K
DOTSON IRA
DOUCE E J
DOWDY MIKE
DOWNEY MARCIA L
DOWNING BETH A
DOWNING MARY

DRAKE JAMES P
DRAKE JOSEPH P
DRAKE LEROY
DRANE RUSSELL
DRAPER DAVID E
DRIAPSA DANIEL
DRURY JAMES HOWARD
DRURY KENNETH
DUBOIS JEFF
DUDGEON PHILLIP L
DUNAWAY JOYCE
DUNCAN BASIL
DUNE RICHARD
DUNN JACK R
DUNN TANYA
DUNSON DAWNE M
DUNSON REBECCA
DUTTON ALICE M
DUTTON F W
DUTTON SCOTT
DUVERNAY CAROL
DYE PAM
DYER LARRY
EACHES ELEANOR
EAGER LISA D
EARHART GERALD
EASLEY PATRICK D
EASTERDAY MEGAN
EASTMAN J B
EASTON ABIGAIL
EASTON D SCOTT
EATON DALE E
EBERT ROBERT E
EBERT SALLY
ECCARD CONNIE
ECHELBERY LYLE
ECKARD EVELYN J
ECKINGER JIM
EDLER R C
EDWARDS CHRISTOPHER
EHRlich JR R
EHRMAN ADA
EISEMAN FRANK W
EKMARK DAVID
ELASS ARTHUR L
ELDRED CHARLES M
ELDRIDGE ARNOLD
ELEY KIMBERLY SUE
ELEY MICHAEL A
ELLEFSON DANA A
ELLIOTT ARTHUR L
ELLIOTT DANIEL E
ELLIOTT JOHN W
ELLSWORTH CHARLES
ELWOOD CAROLINE
EMBERLING RAY B
EMERICK GATHYL B
EMERY ROBERT N
EPELY NANCY A
EQUITABLE RELOCATION MA
EQUIVANTAGE INC
ERVIN FREDERICK C
ERWIN KARI
ESPY VONNA M
ETGEN GEORGE
EVANS ANDREW J
EVANS JAMES
EVANS MAXINE
EVANS NORMAN
EVANS RAYMOND C
EVANS TINA
EVERETT JON E
EVERHART JUDY
EVERLY WILLIAM
EVERLY WILLIAM L
EWING JEFF
EWING MELVIN K
F H A
FAIRCHILD MARQUITA
FAIRCHILD ROBERT A
FANNIN CATHENA
FANNON MICHAEL W
FARMER FRED E
FARMER LEE SHARON
FARRELL GINETTE J
FARRINGTON WILLIAM
FARRIS R H
FAULKNER CHARLES
FAUST J J
FELLABUM CLETIS J
FERGUSON ALLEN F
FERGUSON JERRY A
FERGUSON RICK
FERGUSON RONALD C
FERGUSON WILLIAM D
FEWELL TONI A
FIELD DAVID

FIELD F C
FIELD RICHARD
FINCHER ROBERT S
FINLEY JERRY
FIRIS PAMELA
FISH STEVEN D
FISHER BARRY
FISHER CHRISTOPHER
FISHER DAN K
FISHER JOHN K
FISHER LOYD T
FISHER MATTHEW
FITCH DAVID S
FITZGERALD DALE H
FITZPATRICK CASSIE
FITZPATRICK J D
FLACH ROBERT
FLEISCHMAN ROBERT N
FLINN FLORENCE A
FLOWY RON
FLOWERS MERRITT
FOGGIN MRS C
FOGGIN NELLIE M
FOGLE JAMES E
FOLK KENNETH C
FOOR RICHARD J
FOOS JEREMY
FORD HELEN
FORD JOHN
FORD SUSAN J
FOREMAN DONNA
FORSYTH BARBARA E
FOSTER CHRIS W
FOSTER JOHN F
FOSTER NANCY J
FOWLER TOM
FOWN KATHY
FOWN TIMOTHY D
FOX II R
FOX PAMELA L
FRAHER CHARLES J
FRAHER LISA E
FRANK CYNTHIA
FRANKLIN DANIEL
FRANKLIN KENNETH
FRANKLIN NATHAN
FRANZ NAOMI C
FRAZIER ROGER D
FREDERICK ANNA
FREDERICK FRANCES
FREDRICK MATTHEW P
FREVERT DANIEL
FRIDLEY LARRY
FRIDLEY MISTY
FRIEND JEFFERY W
FRIEND TERRY
FRIEND TERRY W
FRONTIERVERS OP.
FRUEH MICHAEL
FRY TENANT SHIRLEY
FRY DANNY
FRY JAMES R
FRY PERRY LANE
FRY SHANNA
FRY SHIRLEY
FRYE ARNOLD
FRYMAN DONALD M
FUCHS PAUL J
FULLER CINDY D
FULLER MAGGIE L
FULLERTON LUCILLE K
FULMER JAY
FULTON RICHARD
FULTON RODNEY D
FUQUA JENNIFER R
GABRIEL JOE
GADD JAMES D
GAINES HAZEL F
GALLANT RICHARD R
GALLEGOS CLAUDIO
GAMBLE AL R
GAMBLE DANA I
GAMBLE SHARON
GAMES JOHN
GANDEE ROGER
GARDNER TERRY
GARMON JAY H
GARMON ROGER J
GARNER J A
GARNER PAMELA M
GARTLEY DAVE
GATCHELL GALE
GAULT DELBERT
GAULT JR DELBERT
GELDMACHER ROBERT
GEORGE BRIAN
GEORGE KEVIN R

GERWIG CYNTHIA
GEYER SUSAN
GIBBS JOHN M
GIBSON ALBERT H
GIBSON CHRISTINE
GIBSON GLEN
GIBSON GLENN W
GIBSON JAMES E
GIBSON JEFFREY H
GIBSON JOHN R
GIBSON KENNETH
GIBSON LEE O
GIBSON RON
GIDDENS JOHN E
GIERHART MARY C
GILBERT ABE
GILBERT CATHY J
GILBERT RICHARD E
GILBERT WILLIAM C
GILLIAM LESLIE
GILLIAM OPAL
GILLISPIE CONNIE
GINTER JANIE
GIST ELDON J
GLASCO PAUL
GLASS CHERYL
GLATHART FOREST
GLIEM JOSEPH
GLIEM ROBERT J
GOLDEN MICHAEL W
GOODING THOMAS L
GORMAN CHARLES
GOSCHE FIRMIN A
GOSSARD RONALD W
GOUDY ANTHONY
GOULD RICHARD L
GRAHAM MARY
GRAHAM ROBERT E
GRAHAM WILLIAM
GRANLEE ANGELA M
GRANT FAY
GRANT WILLIAM
GRASLEY JESICA
GRAY KEITH B
GRAY MARY J
GREEN GEORGIA
GREEN JAMES D
GREEN KIM
GREEN LEONARD H
GREEN MICHAEL J
GREEN MILFORD B
GREENE CHARLES S
GREENE DUANE
GREENE MARION
GREENE RICHARD E
GREENO DAN
GREER SCOTT A
GREGORY RUTHELLA
GRICE GARY
GRIFFIN RONALD J
GRIFFITH TIM
GRITT MARTINI J
GROSS JIM L
GROSSMAN MICHAEL C
GROVES ADDIE
GRUMBING ROBERT D
GUFFEY GARY
GUNTER JAMES
GUTHERY THOMAS F
H B S ENTERPRISES
HAAS ROBBINS FREDERICK
HABERMAN WILLIAM J
HAFFELDER GLEN S
HAILE JAMES
HAILE SHERYL
HAINES D W
HAINES WILLIAM
HALDEMAN OLGUA M
HALE GEORGE C
HALE RUBY
HALL III JAMES H
HALL DOUGLAS
HALL EICHORN ALICE L
HALL JAMIE
HALL JO
HALL LORIE E
HALL NORMAN
HALL ROBERT C
HALL SHERRY L
HALL SUSAN
HALL VIRGIL
HALL WOODROW
HAMBLIN MICHAEL
HAMILTON ANTHONY
HAMILTON JAMES R
HAMILTON PAULA
HAMILTON RICHARD

HAMM CAROLYN
HAMM TROY E
HAMMER JERALD
HANEY KATHY L
HANLIN GORDON A
HANLOH ANDREW J
HARBULA D LEE
HARDACRE CAROL
HARDIN MARTHA
HARFORD ARCHIE
HARLEY GARRY L
HARP MICHELLE L
HARPER EDWARD
HARPER THOMAS A
HARRAH WILLIE C
HARRELL BOBBY H
HARRELL CHRIS L
HARRIS GERALDINE
HARRIS JOHN W
HARRIS PATRICIA A
HARRIS PHILIP L
HARRISON LINDSAY
HARROD RUSSELL
HARSH HOWARD
HARSHE MRS RUSSELL D
HART CLENAN
HART RICHARD D
HARTMAN JR M
HARTMAN MICHAEL
HARTY DONALD A
HASHMAN ISABELLE P
HASKELL ROY D
HASTINGS G.R.
HASTINGS KATHY
HASTINGS PEG
HASTINGS RICK
HATTERY JERRY
HATTERY RANDALL
HAUENSTEIN ELIZABETH
HAVEN JOHN H
HAWKE ROBERT L
HAWLEY RICHARD
HEART OF OHIO INVEST
HEASTON DANIEL J
HEBERLING LYLE
HECKATHORN DWIGHT E
HECKER B A
HECKMAN CHRIS
HEFLICK SAM
HEFNER STEVE
HEIM KURT
HEISE PERRY
HELLER GARY
HELTON EVA
HENDERSON LOWE APRIL
HENDERSON RANDY B
HENNING CATHERINE D
HENRICKSEN GARY H
HENSLEY JOHN M
HERR KATHY
HERR TODD
HERSHEY SHANE
HETTINGER JAMES R
HEWETT LINDA
HI ROAD DRIVE IN
HICKERSON GERALD S
HICKMAN JAMES M
HICKMAN JOHN J
HICKS PEARL
HICKS RICHARD
HIGGINBOTHAM L M
HIGGINS RICHARD
HIGH MICHAEL E
HIGHLAND NANCY J
HILDEBRAND LEROY
HILDRETH DAN
HILDRETH RONALD
HILL CHRIS
HILL DAVID A
HILL JAMES
HILL PATRICIA L
HILL ROBERT L
HILL SCOTT
HINKLE DEAN B
HINKLE FARM AGENCY
HINKLIN ROY A
HINTON JAMES M
HINTON PAUL E
HINTON ROY
HINZE KELLEY R
HIRSCH WILLIAM
HITESHEW DAVID
HOEFER ERIC J
HOFFMAN DALLAS
HOFFMAN FRANK B
HOFFMAN GLENNA
HOFFMAN HOWARD W

HOFFMAN KARL
HOFFMAN PAUL J
HOFFMAN PAULINE
HOGAN THERESA J
HOGG DONALD L
HOLBROOK FOREST
HOLBROOK KENNETH
HOLBROOK ROBERT
HOLCOMB DAVID L
HOLDERBY GEORGE
HOLLAND GARY
HOLLAND JAMES
HOLLARS JESSE L
HOLLON JAMES L
HOLLON RHONDA WADDLE
HOLLOWAY CAROL
HOLM C DENNIS
HOLMAN JAMES D
HOLMAN VIRGIL
HOLT RONALD
HOLTSBERRY DENNIS W
HOLTSBERRY JENNY
HOLTZ JULIE C
HOLZWART HARLEY
HOLZWART MARK W
HOMAN BRIAN
HOME EQUITY
HONAKER SCOTT
HONEGGER HAL D
HOOK JOHN C
HOOVER KEVIN M
HOOVLER M WILLIAM
HOPKINS BETTY L
HOPKINS CRAIG
HOPKINS VALARIE
HORD WINN
HORN DELSON E
HOSKINS LINDA R
HOST FRED J
HOUCHINS BONITA
HOUCHINS JEFF
HOUK REX
HOUSE MARY J
HOUSEWORTH GERALD H
HOUSEWORTH LINDA
HOWARD BEVERLY
HOWARD GEORGE W
HOWARD ROBERT
HOWELL DANNY
HOWELL NORMAN E
HOWEY JOHN
HUBBELL STEVE
HUCKABA ANGELA
HUDAK DAVID E
HUDGEL REBECCA
HUDKIN JOSEPH
HUDSON LARRY J
HUDSON SHIRLEY A
HUGHES JAMES A
HUGHES TRACI
HULL CLINTON A
HULL JOHN W
HULL JOHN H
HULLSMYER RANDALL L
HUNNAMAN ROGER
HUNT DALLAS
HUNTER GARY
HUNTER TRINA
HURLEY ROBERT G
HUSS STANLEY
HUSTON JR DON R
HUTCHINSON BRAD
HUTCHINSON DOROTHY
HUTCHISON GINA
HYNDS ALEXANDER H
ICKES OSCAR
ICKES ROBERT
IAMS KENNETHA
IMBODY JIM
INGLEDUE CHARLES R
INGRAM ANDREA
IRBY MARK
IRELAND DONALD E
IREY RICHARD C
IRONS RYAN M
ISBELL MARY E
ISLES GARY L
ISON LYNDA
ISON MALEA
IVY DARRELL
J G CLARK
JACKMAN JOHNNADAM
JACKSON CHARLES
JACKSON DELORIS
JACKSON DIANA F
JACKSON FRANK
JACKSON GEORGE M

JACKSON JACK
JACKSON JAMES W
JACKSON JANET L
JACKSON LYNETTE E
JACKSON SAM
JACOBS CHARLES M
JAHN JAMES R
JAMES BARBARA J
JAMES RONDA L
JAMICK ROBERT C
JAMISON ERNEST B
JANSON DAVID
JANUARY E W
JAYCOX CHARLES
JAYCOX HELEN F
JEFFREY JESSIE
JENKINS CARL
JENKINS H W
JENNER JAY E
JENNEY JAMES R
JENSEN MICHAEL
JEREW CHERYL A
JEROME WAYNE
JESIONEK EDWARD J
JETT WILLIAM
JEWELL GARY
JEWELL JAMES C
JEWELL JEFFREY D
JIVIDEN ERNEST
JIVIDEN GERALD
JOHNS CATHER INEM
JOHNSON BOBBY
JOHNSON CARL E
JOHNSON CATHERINE
JOHNSON CLYDE
JOHNSON ERNEST W
JOHNSON J K
JOHNSON JOSEPH L
JOHNSON LINDA C
JOHNSON R H
JOHNSON RICHARD
JOHNSON THOMAS L
JOHNSON WILLIAM
JOHNSTON ALICIA
JOHNSTON HAROLD
JOHNSTON JOHN
JOHNSTON KATHY
JOHNSTON MONETTA
JOHNSTON STEVEN
JOLLEY REBECCA
JONES ALICE FAY
JONES ANGELA
JONES BILL
JONES BRENDA
JONES DOUG
JONES JAMES E
JONES JOANNE
JONES SAMUEL J
JONES SHARON
JONES TERRANCE
JONES VANESSA
JONES VONDA
JONSSON RICHARD
JORDAN GARY
JORDAN JACKIE
JORDAN LEE A
JORDAN LOIS
JORDAN MATT J
JOSEPH BERNIE L
JOSEPH BRIAN F
JOSEPH ROBERT
JUSTICE DELBERT
JUSTICE ESTELLA
KAFFER HARRY
KAIN PETER B
KAISER DAVID L
KALB MELANIE
KAROTKO DAVID A
KASS JOHN J
KAUBLE THERESA
KAUFFMAN GLEN
KEAN EDWARD E
KEANE THOMAS
KECK ALMA
KECKLER SANDY L
KEERAN HEATHER
KEIFER MARTIN
KELLER JULIE A
KELLEY JAMES
KELLEY JEFF
KELLOGG GERALD L
KELLOGG LEONARD E
KELLY DOROTHY M
KELLY SERGE
KEMPTON STANLEY
KEMPTON CYNTHIA L
KENDALL MARY

KENDRICK JOHN W
KENNEDY CECILIA
KENNISON RHONDA
KEPFORD EDWINA
KERNS ELIZABETH
KERNS JILL
KIBLER PHILLIP E
KIDD CLAIR E
KILBURN NANCY
KILE DOROTHY O
KILGORE LISA
KILLEN CAROLYN K
KILLEN RUSSELL
KIMBROUGH PATRICIA A
KIN WELL OPER ATINGCO
KINARK CORPOR ATION
KINDELL KATHERINE
KING CHRISOPHE
KING CONSTRUCTION
KING ED
KING HARLEY
KING JAMES E
KING KEVIN
KING MICHAEL
KING ROBERT C
KINNEAR DAVID
KIRBY KAREN E
KIRKPATRICK JEFFREY S
KISOR KEVIN
KISSLING DEBBIE
KISSLING LARRY E
KISSLING WILLIAM
KITCHEN WANDA
KITTS HARRY L
KITTS SR R
KLAIBER RUSSELL
KLAUSING LEONARD R
KLEMAN ROBERT L
KLETT DANA
KLINE HEIDI
KLINGER ERIC
KLINGLER TONJA
KLOTTS TONY L
KNAPP EDWARD
KNAUL CONNIE
KNAUL DOUGLAS
KNIPP LLOYD
KNISLEY DEBRA L
KNOTTS EVERETTE
KNOTTS KENNETH
KOKAS TRISTA
KONVAS JOHN
KOTSON CHARLES E
KRAM DENNIS W
KRANER LOWELL
KRETZ BETH
KROM TERRY L
KROTINE SHELLEY
KRUG KENNETH J
KRUGER EARL E
KUBA AMANDA
KUBE DAVID M
KUENZLI PAUL L
KUNKLE THEODORE
KUNTZ JOHN E
KYVIG JAMES B
LACKEY BRENDA
LACKEY PRISCILLA SUE
LAGOS JOHN C
LAHUGH CHARLES C
LAING MARIA F
LAIRD GEORGE D
LAKE KENNETH
LAKE SANITATION
LAMA DONALD E
LAMB JOSEPH
LAMMERS VICKIE
LONDON BROTHE RS
LANE ALVIN
LANGENKAMP JOHN
LANGENKAMP JOHN B
LANTHROM GARLAND E
LANTZ DOUGLAS
LATIMER HUGH M
LAU WILLIAM R
LAUWHUN BETTY J
LAWRENCE BOBBY
LAWSON JULIA
LAWSON MARY L
LAY LEONARD
LEACH ROY A
LEACH TIM
LEADBETTER TODD G
LEARY MARK
LEBLANC GLORIA
LEE CYNTHIA J
LEE ROBERT E

LEFFLER WILLIAM B
LEGG MICHAEL J
LEHMAN DENNIS
LEIGH GREG
LEMASTER MICHAEL
LEMASTERS WALTER
LEONARD JAMIE
LEONARD MARY
LEPINSKI TOM
LESIEUR WILLIAM
LESTER MARJORIE
LESTER MICHAEL
LESTER RICHARD
LEVERING THOMAS L
LEVERINGS G N
LEWIS BOBBI J
LEWIS CALVIN
LEWIS DAN
LEWIS ED
LEWIS KATHERINE E
LEWIS RAYMOND
LICKWAR REBECCA A
LIFE INS CO METROPOLITAN
LIGGETT DAN
LIGHTNER DEBORAH J
LILES LARRY
LILES RODNEY
LIMING G C
LINCOLN LIFE INS
LIND ROSEMARY
LINKENHOKER JAMES T
LINSTEDT LARRY
LIPINSKI TERRI
LITTLE DAVID
LITTLER JOHN G
LIVENGOOD MIKE J
LLANES ANDRES
LLOYD O E
LOCAL #241 UNITED RUBBER
LOCK JACK L
LOCKRIDGE JOHN W
LODGE WAYNE F
LOGAN STEVE
LONES BRAD
LONG DANIEL L
LONG DWIGHT
LONG NORMAN
LONG RAYMOND
LOOKER RONALD
LOUGH HERMAN
LOWE DWIGHT D
LOWE NANCY K
LOWER DICK
LOWREY ROBERT
LUCAS DARREN
LUCAS KENNETH M
LUCAS MICHAEL D
LUDLUM HOUSTON
LUIKART ROBERTA
LUND PENNY L
LUNGUY DENNIS
LYNCH TIM
LYNNE DEBRA
LYONS JAMES
M & S INC
MABREY DAVE
MACK DAVID A
MADDEN MICHELE R
MAGGERT RACHEL
MAGNUSSON I C
MAHAFFEY THOMAS M
MAHALIK MICHAEL P
MAHER JAMES L
MAIN TRAVIS
MAJOROS TIBOR
MALDONADA TAMMY
MALONE BARBARA
MALONE TERRI
MANGIN TODD
MANN RANDALL K
MANNASMITH RANDY L
MANN'S JEAN E
MANN'S LISA
MANN'S RENEE F
MANSHIP MICHAEL J
MARDIS MURIEL E
MARION CONTRACTING CO
MARION DIV IN SASSO
MARION POWER SHOVEL CO
MARKS JOHN E
MARKS REX W
MARKS ROBERT L
MARSHALL OPAL J
MARTIN A C
MARTIN CHRISTINE R
MARTIN JIM
MARTIN JJ PEPPER

MARTIN KENNETH E
MARTIN LONNIE W
MARTIN MICHELLE
MARTIN NEIL
MARTIN ROBERT K
MARTIN STEPHEN R
MARTIN W A
MARTIN WILLIAM F
MARTINEZ JOYCE L
MASON GARAGE RICKY L
MASON INC R
MASON ROY
MATHERLY GLEN L
MATHERS MELVIN E
MATHEWS LORETTA M
MATHIS ROGER L
MATLAK WILLIAM M
MATTESON DAVID
MATTESON VERNARD
MATTIX KENNETH
MATTIX RICHARD
MATTOX EDWARD E
MAW GORDON
MAXSON RAYMOND E
MAY TIM
MAYNARD STACY R
MAZE KIMBERLY
MC CURDY NICHOLE
MCALPIN JANET
MCBRIDE DONALD E
MCCALLISTER JOHN A
MCCHESNEY PAUL
MCCLAIN WILLIAM R
MCCLINTOCK GEORGE S
MCCLINTOCK KENNETH E
MCCLOUD JEFF
MCCCLUSKY THOMAS E
MCCOMBS DEAN
MCCOMBS EVERETT M
MCCONNELL GUY
MCCORMICK ETHEL
MCCOY JR D
MCCOY KEN R
MCCOY MINNIE F
MCCOY WILLIAM J
MCCULLOUGH LAURIE
MCDANEL PAUL B
MCDANIEL BEVERLY A
MCDONALD GLEN M
MCDONALD JACK
MCDOWELL JAMES
MCELREE NEAL
MCENTEE RICHARD C
MCGHEE ANGIE
MCGINNIS MICHAEL
MCGLOTHLIN WILLIAM M
MCGONAGILL JAMES
MCGOWAN MIKE
MCGUE JERRY
MCGUIRE ANGELA N
MCGUIRE PHILIP
MCINTOSH TENZLEY
MCKEAN BEVERLY
MCKEAN CRYSTAL
MCKEAN KENNETH W
MCKEE BRIAN
MCKEE LONEY D
MCKENSEY BILL
MCKENZIE TRACI L
MCKINLEY LINDA L
MCKINLEY TERRY L
MCKINNISS DANIELLE N
MCKINNISS DELORES
MCLAUGHLIN HARRY
MCMILLAN THOMAS
MCNAMARA CHRISTIAN
MCNULTY RICHARD
MCQUISTION R A
MCQUOWN IVORY
MEACHEM ALBERT
MEACHEM CRYSTAL
MEACHEM MARY
MEAD BILLY J
MEAD JO ANNA
MEADE KENNETH
MEADE THOMAS J
MEADOWS KENNETH
MEDDINGS MIKE
MEEKS RAYMOND G
MEISTER LINDA
MEKUSH HENRY
MELTON SHEILA
MENTZER LARRY
MERCER BILLY
MERCHANT KEVIN
MERRIMAN ROBERT
MESSENGER DOUGLAS

MESSENGER JOYCE
MESSENGER RICHARD H
MESSENGER THOMAS
MESSENGER WILLIAM
METZ RICHARD
METZGER JUDITH L
MEYER E ELIZABETH
MEYER GREG M
MEYER STEVEN M
MEYER WILLIAM C
MICHAELS JAMES R
MICHAELS JEFFERY
MIERS MIKE F
MIERZEJEWSKI KIM
MIKOLIC WILLIAM
MILEY JAMES
MILLER BRUCE
MILLER DARREN
MILLER DELORES L
MILLER EDWARD J
MILLER GLORIA J
MILLER JAMES R
MILLER JAY G
MILLER JOHN
MILLER JOHN D
MILLER JOHN P
MILLER JON A
MILLER KIMBERLY S
MILLER PATRICIA ANN
MILLER ROBERT
MILLER ROBERT A
MILLER RONALD
MILLER SUE E
MILLER THOMAS
MILLER VICTOR
MILLER WILLIAM E
MILLER WILLIAM F
MILLS CHARLES
MILLS GLENN
MILLS LOIS J
MILLS WILLIAM O
MILLS WILLIAM T
MILLS WILLIAM W
MILTON DOROTHY
MINER DONALD E
MISSIG RAYMOND
MITCHELL DEBRA
MITCHELL FRANK
MITCHELL LINDA M
MITCHELL MARCELLA
MITCHELL MICHAEL D
MITCHELL PAUL
MITCHELL SARAH J
MITCHEM R D
MIU BARBARA
MOE TIMOTHY J
MOFFITT BRAD
MOHLER DONALD
MOHRE FLORENCE N
MOLL LARRY
MOLL MIKE J
MOLLE DAVID
MONFORT BOB
MONTGOMERY MIKE
MOORE ALLEN
MOORE BRENDA
MOORE DOROTHY I
MOORE FREDA
MOORE JERROLD
MOORE JERRY
MOORE JR R
MOORE LOLA A
MOORE MICHAEL
MOORE MIKE
MOORE PENNY LEE
MOORE QUINT E
MOORE RAYMOND L
MOORE RICHARD A
MOORE TERRIE LYNN
MOORE TRACY
MOORE WARREN
MOOSE MICHAEL G
MORGASON BRYAN K
MORNINGSTAR RAY
MORRIS DONNA
MORRIS F J
MORRIS RICKY H
MORRIS ROBERT M
MORRISON ORVILLE
MORRISON TIM
MORROW LARRY
MORSE SHERRY
MORTON JAMES E
MOSBACKER GARY
MOSELEY JEFFREY W
MOSER EMERSON E
MOSES PATRICIA A

MOSHER JAMES
MOSURE JOSH E
MOTTER TODD
MOUNT VERONICA
MOUNTS RONALD
MOURY DAROLD J
MOUSER CHARLES L
MOWERY MARILYN
MU CHUNG H
MULLINS JEFFREY L
MULLINS LINDA
MULLINS PAUL
MULLINS ROY
MULLINS TAYLOR S
MUNDY ROBERT
MURPHY HUGH F
MURPHY IONA
MURRAY RICHARD A
MURRAY RICKY
MURRAY RUTH
MURRAY THOMAS G
MYERS CHARLENE
MYERS GARRETT
MYERS GEORGE T
MYERS STEVEN L
MYERS VIRGIL
NALLS DARYL
NAPPER PATRICIA
NATIONAL CITY
NAUS PHIL
NEAL DANIEL F
NEAL DEWAYNE
NEAL WILLIAM E
NEEDHAM JAMES M
NEELEY DONNA
NEELEY LAWRENCE JR
NEELY THOMAS J
NEIDHART AMY L
NELSON KERRY D
NELSON LARRY
NELSON LUTHER
NELSON ROBERT SHAWN
NELTON WILLIAM
NEPTUNE TERRY W
NEWELL JR C
NEWKAM EDWARD
NEWKIRK CHARLES
NEWLAND JERRY
NEWLAND LAVERNE L
NEWLAND MICHAEL L
NEWLAND MICHAEL R
NEWLAND PAUL R
NEWLAND T J
NEWMAN PAUL
NEWMAN RAY
NEWSOME BRANDON
NICHOLS DEAN
NICHOLS HARVEY A
NICHOLS JON
NICHOLSON JACK
NICKLAUS FREDERICK A
NICKLES LESLIE
NICKOLAS TED
NICOLOSI DEBRA
NIEMEYER MICHAEL J
NIGH PAMELA S
NILES RICHARD
NIXON BROTHER S
NOBLE KAY
NORDEN RACHEL L
NORMAN JEFF A
NORTON JR J
NORVELL CHARLES
NORVIEL DONALD
NUSS STEPHANIE
NUTT SR. ROBERT
O RORKE CATHERINE
OBENOUR BRIAN
OBENOUR M G
OBERDIER DON D
OBERDIER MICHAEL D
O'BRIEN DONNA J
O'DELL JAMES
O'DELL LARRY
ODEN AMBER N
OF PRAYER HOUSE
OGLESBEE DWIGHT W
O'HARE JAMES E
OHIO OUTDOOR ADVERTISING
OHIO POWER CO
OHLER ROBERT B
OLDFIELD DEWEY
OLDS SCOTT
ONIFER CINDY
OSBORNE EDWARD W
OSBORNE EMMITT
OSBORNE J M

OSBORNE JAMIE R
OSBOURN ERNEST R
OSKINS LAWRENCE E
OSTROM BRENT A
OSWALD RICHARD A
OTTEN CORT F
OTTER CREEK EXP INC
OUSLEY PAULINE
OVERS JEANNETTE
OWEN II KENNETH R
OWENS CHRISTOPHER
PACER ROBERT
PACK PAUL
PALMER III H
PALMER MICHAEL E
PALMER ROBERT
PAN ENERGY SYSTEMS
PANGBORN GARY
PANNING DONALD
PARISH JOHN A
PARISH ROBERT L
PARKS WILBERT
PARMER RANDALL V
PARSONS BETH L
PATCHETT JACK
PATRICK BARBARA A
PATRICK FLOYD
PATTERSON DONNA E
PATTERSON JAMES B
PATTERSON JOHN
PATTON JACK
PAULMAN SANDRA M
PAULUS PATRICK
PEASE KEITH N
PECK JENNIFER M
PEDDICORD GEORGE
PEERY EDWARD L
PELLOT DENNIS
PENDLETON DALE
PENDLETON PERD E
PENNER KEVIN
PENNINGTON CHERI
PENNINGTON WANDA
PENNY CECIL O
PEREZ DANIEL
PERKINS DALE
PERKINS EDDIE
PERSINGER JR R
PERTZ PATRICIA A
PETAK ROSEMARIE
PETERS GARY L
PETERSON ARTHUR L
PETTIT DON
PEYTON LARRY
PFEIFFER DONALD
PFLEIDER CHARLENE
PFLEIDER ROBERT
PHALEN DENNIS
PHELPS LARRY
PHILLIPS AMY
PHILLIPS CHARLES M
PHILLIPS JACK W
PHILLIPS RONALD W
PHIPPS GARY L
PIAR RAYMOND A
PIATT WILLIAM K
PICKETT DOUGLAS J
PIERCE KAY
PINNICK TERRY
PLEASANT DONNA
PLOTNER BRAD
PLOWMAN CHARLES
PLUNKETT EDGAR D
POLAND JR ROY D
POLK CANDY
PORTER ERVIN
PORTER JOHN F
PORTER LARRY F
POST JEFF
POWELL RICHARD A
POWELL W Z
POWERS MILAN W
PRATER BLOUNT
PRATER CHARLES
PRATER DEBORAH
PRATER RAYMOND
PRATER WILMER
PRATT PATRICK W
PRESCOTT ROD
PRICE BARBARA
PRICE JIM F
PRICE JOHN F
PRICE RICHARD D
PRICE ROBERT A
PRICE TOMMY R
PRITCHETT KATRINA
PRITT CLIFFORD

PRITT ROBERT
 PRODUCERS LIVESTOCK ASSN
 PRYOR TRINA
 PYKA NICHOLAS
 QUAY JAMES R
 QUAY WYATT E
 QURAISHI MOHAMMAD
 RADCLIFF SR R
 RAEDER INC
 RAGER ROBERT J
 RAINES MICHAEL S
 RAINIER BARBARA H
 RAKES HENRY E
 RALL JOSEPH M
 RALSTON JAMES E
 RAMEY KENDEL
 RAMEY RITCHE
 RAMIREZ ORLANDO
 RAMSEY KENNETH E
 RANSOME JACKIE B
 RASEY BARBARA J
 RASEY EDDIE L
 RASEY EDGAR L
 RASNICK TOYNUA
 RATHBURN BRAD
 RAUSCH AL
 RAY MARGARET
 RAY MILDRED A
 RAYBURN LEONARD
 RAYBURN SCOTT
 REALTY MCNAMARA
 REAMES TERRI
 REAMES WILLIAM
 REASONER MICHAEL
 RED LOREN
 REDD DAVID
 REDD F E
 REDD JACK M
 REDDINGER W RANDALL
 REDMON JOHN A
 REECE CHARLES
 REECE RICHARD G
 REECE RONALD W
 REECE TODD A
 REED FRANK
 REED LISA
 REED LISA A
 REED TOM
 REEDER GEORGE
 REEVE BRYAN
 REIDY NORBERT
 REIFF ALWYN
 REIFF FREDERICK
 REIGLE MONTY E
 REINWALD KEITH
 RELIABLE MOBILE HOME SVC
 RENDALL ROBERT J
 RENTSCHLER BEN
 REVARD GARY
 RHINEHART WILFORD
 RHOAD MARY J
 RHOAD WILLIAM
 RHOADS GLEN
 RHODES TERESA
 RIBLEY MARK D
 RICE E R
 RICE MELANIE
 RICHARDS RICHARD J
 RICHARDSON CARL
 RICHARDSON LARRY
 RICHARDSON MICHELE
 RICHARDSON RUSSELL
 RIDDLE JOHN M
 RIEDLINGER LULA
 RIES BOB
 RIFE RONALD A
 RIFE TINA C
 RIFF JAMES B
 RIGDON DONALD
 RIGEL ROBERT ALLEN
 RIGGS LINDA L
 RIGNEY JAMES E
 RIGSBY JAMES W
 RILEY HAROLD
 RILEY JOHN L JR
 RILEY MURREL
 RILEY ROBERT W
 RINBOLT TRICIA
 RINDERLE JOSEPH
 RINEHART MATTHEW
 RISNER DOUGLAS
 RISNER PENNY
 RISSER JAY L
 RISTER GARY L
 RITCHEY HORACE
 RITCHIE RANDY
 RITCHISON RICHARD

RITTENBERRY GERTIS R
 ROARICK HERMAN
 ROBBINS JOSEPH C
 ROBERTS ANDREW L
 ROBERTS JAMIE S
 ROBERTS KNUTE
 ROBERTS SARAH
 ROBILLARD JOSEPH
 ROBINETTE ERNESTINE
 ROBINETTE ROBIN G
 ROBINSON BETTY
 ROBINSON ELLEN
 ROBINSON JACKIE L
 ROBINSON KEVIN
 ROBINSON RUTH
 ROBINSON SHAWN
 ROCKFORD HIDE & FUR CO
 ROCKHILL RONALD E
 ROCKHOLD MARGARET A
 ROCKHOLD MRS ROY W
 ROCKWELL JACK W
 RODENBERGER COLONEL
 ROGERS CLARENCE F
 ROGERS GRACE
 ROHRS ARTHUR
 ROLSTON CHARLES
 ROMERO MELISSA J
 ROOF VICKIE
 ROOP DONALD L
 ROSE BENNIE
 ROSE BILLIE J
 ROSE GENEVA
 ROSE MARILYN S
 ROSEBERRY JAMIE
 ROSHON MIKE D
 ROSS DEBORAH L
 ROSS ELIZABETH
 ROSS JERRY
 ROSS MARY L
 ROSS TERRY L
 ROSSWURM MARK
 ROSTORFER KEVIN L
 ROSTORFER TERESA
 ROSZMAN JOHN D
 ROTH ALLEN
 ROTH JAMES
 ROTH JOHN
 ROUSH DENNIS
 ROW TERESA J
 ROWE DAVID E
 ROWE DOROTHY
 ROWE GEORGE
 ROWE JR ROBERT L
 ROWE SUSAN K
 ROWLAND BILL
 ROWLAND GEORGE G
 ROWLINSON JACKIE
 ROYER JOHN S
 RUBINS EVERETT D
 RUBY RICHARD E
 RUDD MARVIN
 RUHL ROBERT
 RUSBLDT AL
 RUSH BRUCE
 RUSH WILLIAM
 RUSMISL RAY
 RUSSELL FRANKLIN
 RUSSELL FREDERICK N
 RUTH FARMS
 RUTH GENE E
 RUTH JENNIFER D
 RUTH LYN
 RUTH ROBERT
 RUTLEDGE JERRY L
 RYAN ROBERT
 SADDLER JACK E
 SADLER RICHARD
 SAFT LARRY W
 SAMONS LEISA
 SAMPSON JIM
 SAMSON LEE D
 SANCENITO JAMES J
 SANDELL DEBORAH J
 SANDERS BEVERLY
 SANDERS CHRISTOPHER B
 SANDERS JEFF
 SANDERS MD DR JIM C
 SANDERS SALLY
 SANDS GMOZELLE
 SANDS ROBYN
 SANFORD CHARLES
 SANITATION LAKE
 SANNER RICHARD E
 SARCO INC
 SARGENT SANDY M
 SATTERFIELD NATHAN D
 SATTERFIELD TREVOR

SAUNDERS JOHN
 SAUNDERS VERNARD
 SAVAGE PEARL V
 SAVINGS OF AMERICA
 SAXTON LESTER
 SAYERS EDWARD
 SAYRE FRANK C
 SAYRE JOE W
 SAYRE NORMA M
 SCARBRO JIMMY W
 SCHAFFET KENNETH
 SCHAUB EARL R
 SCHEFF ROBERT A
 SCHEIDERER BRENT
 SCHENKEL DARREN J
 SCHERTZER BRACK
 SCHIEFER A
 SCHLEENBAKER PHIL
 SCHLEENBAKER ROBERT E
 SCHMITZ GARY
 SCHNEIDER JAMES P
 SCHNEIDER JOHN
 SCHNEPP ROGER
 SCHNITZLER GREGORY E
 SCHOENBERGER CATHY
 SCHRIML DAVID A
 SCHROEDER TOM
 SCHROLL ROBERT
 SCHROTE FARMS
 SCHUBEL MARK
 SCHULER DANIEL
 SCHULTZ GENE
 SCHURMAN W R
 SCHWAB KENNY
 SCHWARTZKOPF JIM
 SCHWENNING MATTHEW P
 SCHWERIN JEFF
 SCOTTO FARM I NC
 SCOTT DALE G
 SCOTT JAMES R
 SCOTT JOHN R
 SCOTT JOSEPH B
 SCOTT MARY
 SCOTT SONNY
 SCOTT TIMOTHY
 SCOTT TOM
 SCROGGINS SHARON L
 SEALSCOTT BRIAN
 SEAMAN KENNETH R
 SEATON EDWARD E
 SECKEL RON
 SEDLOCK JERRY
 SEIGEL ASHLEY
 SEIGFRIED JOHN J
 SEILER JERRY
 SEITER MILDRED
 SEITER PHILLIP G
 SELLARS BOBBIE JO
 SENTERS CALVIN K
 SERGENT OSCAR E
 SERMON HUGH E
 SESSLER MARION E
 SEXTON DELLA M
 SEXTON PEGGY
 SEXTON WILLARD
 SHADLEY RANDY
 SHAFFER CATHERINE
 SHAFFER NEIL E
 SHAFFER PAUL D
 SHAMBLIN DONNA F
 SHAPPARD ROBERT C
 SHARK EDGAR L
 SHARK THOMAS L
 SHARP CARL J
 SHARP GLAYDEN D
 SHAW DARRELL
 SHAW LAWRENCE D
 SHAW RANDY E
 SHELTON ROBERT D
 SHELTON WILLIAM L
 SHENANDOAH LANDSCAPING
 SHEPHERD JEFF
 SHEPHERD KATHY L
 SHEPHERD STEVE
 SHERER JACK
 SHERIFF VIRGIL
 SHIELDS DONALD E
 SHIELDS JERRY B
 SHIELDS TRISHA
 SHILLING GEORGE
 SHINDLEDECKER RONNIE L
 SHINKLE ALBERT L
 SHIRK CHRISTINE
 SHIRK PAUL F
 SHIRK SCOTT D
 SHOAF DENNIS
 SHOAF PAUL L

SHOCKEY EMMA
 SHONKWILER WAYNE T
 SHORT BEVERLY K
 SHORTRIDGE JAMES M
 SHOULTS ROBERT
 SHOUP LESTER
 SHRIVER DAVID W
 SHULAW MRS E
 SHULL RITA L
 SHUMAKER JACK
 SHUMAKER JAMIE L
 SHUMAKER RONALD R
 SHUSTER SUNDEE L
 SIAS GARY L
 SIAS MARTIN J
 SIAS MELVIN
 SIAS NORMAN
 SIDWELL ROGER D
 SIEGENTHALER THOMAS
 SIELING BRUCE
 SIMMONS JON C
 SIMMONS LARRY
 SIMON ANTHONY
 SIMONES WILLIAM A
 SIMS ROBERT
 SINZINGER DAN
 SISE PETER L
 SKAGGS JAMES W
 SKEENS JAMES
 SLADE ALAN B
 SLOAN DAVID L
 SLOAN JOHN
 SLOAN SHARON K
 SLUSHER JOHN M
 SMELSER FELICIA JO
 SMITH AMBER N
 SMITH ANGELA M
 SMITH BILLY R
 SMITH CHRISTINE
 SMITH CONNIE L
 SMITH DAN
 SMITH DAVID T
 SMITH DEBBIE
 SMITH DIANA
 SMITH DON
 SMITH EMILY
 SMITH GILBERT
 SMITH GLENN W
 SMITH GREG G
 SMITH H CURTIS
 SMITH HELEN
 SMITH HERBERT H
 SMITH ILENE
 SMITH JAMES P
 SMITH JEAN
 SMITH JEFFREY L
 SMITH JOHN M
 SMITH JR E
 SMITH JR R
 SMITH JUANITA
 SMITH KIMBERLY
 SMITH LETHA
 SMITH LISA C
 SMITH LORA L
 SMITH MARILYN K
 SMITH MELVIN
 SMITH MICHAEL
 SMITH MICHAEL L
 SMITH PAUL H
 SMITH PETE
 SMITH ROBERT D
 SMITH RUTH
 SMITH SANDRA L
 SMITH STEFFEN
 SMITH TRAVIS
 SMITH VICTORIA D
 SMITH WAYNE N
 SNYDER ALAN P
 SNYDER CALVIN
 SNYDER CARRIE
 SNYDER DAVID E
 SNYDER GARY L
 SNYDER RANDY
 SNYDER SONJA
 SNYDER THOMAS G
 SOLIDAY CHERYL A
 SOUSLEY WALTER
 SOUTHERLAND GARY
 SOWERS DONALD L
 SPARKS RONALD
 SPARLING ERIC
 SPARLING STEVEN G
 SPARLING WILLIAM P
 SPATH G D
 SPEAKMAN ROBERT
 SPEARMAN DEAN
 SPECK KYLE D

SPEIRS CHRISTINA
 SPENCER AARON M
 SPENCER JOE
 SPENCER MARCIA
 SPENCER ROBERT
 SPEROS J W
 SPICER DONALD A
 SPICER GREGORY
 SPRADLIN JAMES M
 SPRADLIN KENNETH
 SPRAGUE RICHARD T
 SPRANG HEATHER
 SPRINGER DORIS M
 SPROULL STEVE E
 SPURGEON JANE S
 ST JOHN MARY L
 STACKLIN STACEY L
 STACY CALLEN
 STAHL S L
 STAKEY LISA
 STALLARD BILLY
 STALLINGS BILL

What Are My Lighting Options?

Starting in 2012, lightbulbs must be more energy efficient.

The three most common bulb options consumers will find on store shelves are:

- Halogen incandescents**
 Energy Savings:* 25 percent
 Lifespan:* Three times longer
 Annual Energy Cost: \$3.50
- Compact Fluorescent Lamps (CFLs)**
 Energy Savings:* 75 percent
 Lifespan:* 10 times longer
 Annual Energy Cost: \$1.20
- Light-emitting diodes (LEDs)**
 Energy Savings:* 75-80 percent
 Lifespan:* 25 times longer
 Annual Energy Cost: \$1

*As compared to traditional incandescent bulbs

Learn more at energysavers.gov/lighting

STALLINGS DORIS J
 STALNAKER DENNIS W
 STALNAKER HAROLD R
 STAMPER PRESTON
 STANBRO DEMERIL H
 STANKO HEATHER M
 STANLEY JANICE R
 STANLEY KAREN
 STANLEY SALLY A
 STAPLETON FRANKLIN W
 STARK BRIAN K
 STEARNS LEWIS M
 STEELE LISA
 STEELE MICHAEL
 STEEN MICHAEL
 STEINMAN DEBBIE
 STELL BAMBI
 STEPHENS BERLIN
 STEPHENS BILL
 STEPHENS JOHN
 STEPHENS THOMAS G
 STERRETT JEFFERY
 STETTLER JAY
 STEVENS BOBBIE
 STEVENS DOUGLAS A
 STEVENS EUGENE F
 STEVENS GREGORY A
 STEVENS GREGORY D
 STEVENS GREGORY J
 STEVENS JOHN D
 STEVENS LAURINE G
 STEVENS THOMAS
 STEWART JOHN E
 STEWART MARGARET
 STEWART RICHARD
 STEWART TAMY
 STIEFF ROGER
 STIFFLER ARTHUR R
 STILLINGS EVERETT
 STINEHELPER MICHAEL L
 STINSON DENNIS
 STOBBE WES
 STOLTZ STEVE M
 STONE CHARLES A
 STONE ELMO
 STONE FLEMON
 STONE JAMES E
 STONE JERRY W
 STOSE A M
 STOUT JOSEPH
 STOUT W ADAM
 STOVER BRIAN
 STOVER GARRY C
 STOVER KYLE M
 STOVER TIM
 STOWE THELMA
 STRAIGHT CYNTHIA
 STRAUSE WILLIAM W
 STRAYER ROBERT D
 STREETS MATTHEW B
 STROUD LARRY
 STUCKMAN ROBERT P
 STURGEON BARBARA
 STURGEON HAROLD L
 STURGILL CHRISTOPHER
 STUTZMAN JEAN
 STUTZMAN MICHAEL J
 STYLES UNLIMI TED
 SUMMA JAMES
 SUMMIT HELEN
 SUTHERLAND AVONELL
 SWAFFORD PAULA
 SWANEY ROBERT
 SWANSON RUTH E
 SWART LINDA
 SWART ROBERT L
 SWARTZ JIM
 SWARTZ RUSSELL E
 SWEARINGEN DELMAR
 SWEARINGEN EDWARD
 SWEARINGEN WILLIAM
 SWIGER T L
 SWINDELL JOSH
 SWINEHART JOE
 SWINEHART MICHAEL
 SWINGER MARY E
 SWISSHELM JAMES
 SYLVESTER EUNICE
 TACKETT ESTILLE
 TACKETT EUGENE
 TACKITT BRUCE
 TAGGI JOHN
 TALLMAN TRUDY S
 TAMILLO BARBARA
 TATE HAL D
 TAVIANO JOHN
 TAYLOR CARLOUS

TAYLOR CHARLES
 TAYLOR GEORGE H
 TAYLOR RICHARD
 TAYNOR KEVIN
 TEAGUE JAMES
 TEAGUE MICHAEL
 TECUMSEH LOCA L750UAW
 TEEL DALE
 TEEPLE JOHN
 TEETS GREGORY
 TELEPHONE&TELEGRAPH
 AMERICAN
 TEM COLE INC
 TEMPLE ALFRED
 TEMPLE JAMES H
 TEMPLE STEVE
 TEMPLE THOMAS
 TERRA NOVA IV
 TERRELL RON
 TERRY JAMES S
 TERRY NANCY D
 TERRY RICHARD
 TERWILLIGER WALTER W
 THEIBAUT DENNIS N
 THIBODEAU BARBARA
 THIEL PATRICIA A
 THOMAS CHARLES E
 THOMAS CHERYL
 THOMAS ERIC G
 THOMAS LARRY
 THOMAS MINDY
 THOMAS PAUL
 THOMAS ROBERT E
 THOMAS SHANDRA
 THOMPSON BRET E
 THOMPSON FAYE
 THOMPSON GEORGE J
 THOMPSON JAMES L
 THOMPSON JAMIE
 THOMPSON KAREN M
 THOMPSON LACINDA M
 THOMPSON RAETTA
 THOMPSON RUBY
 THOMSON HELEN
 THOMSON JAMES F
 THORNTON MARGUERIT
 TIMMONS WARREN
 TIMNEY THOMAS J
 TLC MINISTIES INC
 TOLBERT JOSEPH A
 TOLLEY ROY L
 TOMPKINS MICHAEL A
 TRACY MALON A
 TRAMONTANA CONRAD
 TRANSAMERICA FINANCIAL
 TRENDX INC
 TRICKEY KATHLEEN M
 TRIMMER EDWARD A
 TRIPLETT TRAVIS R
 TROXELL SHERRY
 TRUBY JERRY
 TRUMBLE WALTER
 TRUSTY ALVIN
 TUCKER AMOS R
 TURK THOMAS
 TURNER CANDY
 TURNER MANDY
 TURNER TERENCE
 TUTTLE TIM N
 TYLER JESSICA
 UHL MARGUERIT E
 ULBRIGHT JIM
 ULERY NICOLE A
 ULRICH DAVID
 ULRICH DONALD F
 UMBROUGH CARL E
 UNDERWOOD KEN
 UNDERWOOD ROBERT
 UNGER CARRIE
 UNGERER GLENN
 VACHON JAMIE
 VACON M L
 VAIL MACK B
 VALENTINE CURT
 VALLADARES JAVIER
 VAN HORNE GEVIN D
 VAN VICKI
 VANBIBBER THOMAS R
 VANBUSKIRK GRETCHEN
 VANCE GLORIA
 VANCE JOHN
 VANDECAR MARIE
 VANDERBOEGH SHEILA
 VANDERPOOL JOHN L
 VANDERVEER DAVID
 VANIMAN R S
 VANSCODER PATRICIA

VANVLERAH LINDA S
 VANWILPE JAMES
 VASQUEZ REYNALDO A
 VELAZCO MARILYN
 VERMILLION KIM
 VIARS CHARLES
 VOISARD MARK
 VOLBERT R A
 VON KAENEL EUGENE
 VOORHIS ELIZABETH
 WACK MICHAEL A
 WADDELL DONALD L
 WADDLE DANNY THOMAS
 WADDLE JACK
 WAGNER ROBERT
 WALDEN SHARON
 WALKER BRIAN M
 WALKER CHERYL J
 WALKER LOIS M
 WALKER THOMAS
 WALLACE BOBBY K
 WALLACE JAMES
 WALLACE MARK
 WALTER ROBERT
 WALTERS MELODY
 WALTERS OLEN F
 WALTERS TEDD
 WALTON HERBERT
 WALTON WILLIAM
 WAMPACH JEFF
 WANAMAKER MIKE
 WARD HARRY E
 WARD JAMES R
 WARD RANDY
 WARMBROD WAYNE
 WARNER MARK A
 WARREN BART D
 WARREN JAMES M
 WATKINS GLENN W
 WATSON EDWARD
 WATTERS JENNIFER
 WATTS BARBARA
 WATTS STEPHANIE
 WAUBEN ROGER
 WAUGH WILLIAM F
 WAY FRANCIS
 WAYLAND TERRY C
 WAYNE CAMPING TS
 WEAVER DAVID E
 WEAVER ELIZABETH
 WEAVER WILLIAM R
 WEBB EDITH
 WEBB LINDA
 WEBB ROBERT L
 WEBB RONALD B
 WEBER ROBERT
 WEDERTZ LOYD
 WEESE KIM
 WEIR CECIL
 WEIR LOIS M
 WEIRICK NEIL
 WEIRICK RICHARD E
 WELCH FLOYD
 WELCH THOMAS B
 WELLBAUM JAMES
 WELLING JAMES H
 WELLS DONNA K
 WELLS EDDIE
 WENIG ELIZABETH A
 WENSINGER J A
 WENTLING ROGER A
 WENTZ TRUTH
 WERLING MELISSA SUE
 WEST BOBI
 WEST MARK E
 WESTLER JOHN M
 WESTON DONALD
 WESTON SUSAN
 WETMORE WILLIAM A
 WHATMAN DONITA
 WHEELER BOB
 WHEELER DAVID
 WHEELER LARRY
 WHETSAL BRUCE
 WHIPPLE NANCY
 WHISLER HOWARD
 WHITAKER STEVEN J
 WHITCUM GARY
 WHITE DAN E
 WHITE DIANA K
 WHITE ELAINE C
 WHITE JAMES D SR
 WHITE JOSEPH C
 WHITE PAUL J
 WHITE RICHARD E
 WHITE RONALD C
 WHITLEY RICK G

WHITTINGTON CLOVIS L
 WHITTINGTON CLOVIS SR
 WICKER ALEX
 WICKER WILL
 WIDMARK KEITH A
 WILAND JOSEPH S
 WILCH JR WALLACE
 WILCOX STEPHAN
 WILCOX THOMAS F
 WILDE STEVE
 WILEY JEAN
 WILHELM MICHAEL R
 WILKINSON ROBERT
 WILLEY GERALD
 WILLIAMS CHARLES W
 WILLIAMS CLAUDE D
 WILLIAMS DAVID
 WILLIAMS FERN
 WILLIAMS PERRY
 WILLIAMS RANDY D
 WILLIAMS RHONDA
 WILLIAMS RONALD P
 WILLIAMS TONY N
 WILLIAMS WALTER
 WILLIAMS WAYNE
 WILLIAMS WILLIAM H
 WILLMETH PAULINE
 WILSON ALICE J
 WILSON BRIAN
 WILSON DAVID A
 WILSON DAWN R
 WILSON FREDERICK
 WILSON JAN
 WILSON JUDY
 WILSON LEE
 WILSON LINDA L
 WILSON PATRICK
 WILSON ROBERT E
 WILSON ROBERT E JR
 WILSON RYAN
 WILSON SHERI
 WILSON TOM
 WILSON WAYNE
 WILT MICHAEL W
 WINEGARDNER HARRY
 WINEGARDNER SANDRA
 WINGFIELD KEVIN
 WINKLER DONALD
 WINKLER GREG
 WINKLER JUDITH G
 WINSOR LARRY D
 WINSTON STEVE
 WINTER L DEBRA
 WINTER RONALD
 WIREMAN DAVID
 WIREMAN DOUG
 WIREMAN JAMES SR
 WIREMAN JENNIFER
 WIREMAN JOHN J
 WIREMAN LEE
 WIREMAN LISA A
 WISE CAROLYN
 WISE DONALD H

WISE LONNIE J
 WISEMAN JAMES F
 WISHON RITA
 WISNIEWSKI WILLIAM
 WITTER JOHN
 WITZEL MILO
 WODARSKI LANORA
 WOLFE CHRISTINA
 WOLFE RALPH
 WOLFE ROBERT J
 WOLFORD RICK
 WOOD L JACK
 WOOD MARLENE
 WOOD THOMAS R
 WOODRUFF PAUL
 WORDEN DONALD
 WORK JANE
 WORKMAN RICHARD
 WORREL JOHN WM
 WOTEN WENDY
 WRENCHY JOE JR
 WRIGHT CHRISTINE
 WRIGHT JANET L
 WRIGHT JUDY
 WRIGHT KEVIN
 WRIGHT TASHA
 WRIGHTSEL EARL W
 WRIGHTSMAN KAREN
 WROBEL WILLIAM
 WURM ARTHUR D
 WYGANT RON
 X ALPHA INT'L LTD
 YANT DONALD
 YATES CHERYL
 YATES JENNIFER L
 YATES LEONARD
 YELTON JIM
 YOCKEY RICHARD
 YOHO JAMES L
 YORK JAMES
 YOST RHONDA M
 YOUNG DAVID M
 YOUNG DAWN
 YOUNG FRANKLIN J
 YOUNG PAM
 YOUNG WILLIS
 ZACHARIAH JOAN
 ZARING LAURETTE L
 ZARING STEPHEN B
 ZENAROLLA MAURO
 ZIMMERMAN RAYMOND P
 ZORN STEPHEN

NEW MEMBERS FOR JUNE 2011

- | | |
|--------------------|----------------------------|
| Jennifer Appleman | Paul Love Jr. |
| Constance Bailey | Brandon M. Miller |
| Steve Bayles | Nationwide Advantage Mort. |
| Kathy S. Blair | Prudential Vandernark |
| Jody Burnett | Stephen J. Rauscher |
| Charles Chaffins | Marilyn Risner |
| Josh Chaney | Tressa Schlesselman |
| Roger Curl | Robert Schutte |
| Roger Donnamiiller | Terrence Sheridan |
| Emma J. Elsasser | Janice Skinner |
| Jerrold Harris | Jan Sleeper |
| Dale Hesser | Cathy Spicer |
| Jane Hoffman | Durward G. Stimmell |
| James E. Johnson | Marcus Troyer |
| Amanda Jordan | Kevin W. Turner |
| Dustin K. Klinger | Randy Vent |
| Melissa Lease | Kim Wells |
| Ronald D. Legg | Betty Ziegler |