

Energy-saving TIPS

Electric use can vary from month-to-month based upon a wide range of factors. You can't compare your family to your next-door neighbor even if your homes are similar. Gathering information about the way your home uses energy will help you identify opportunities to save. Here are a few items to keep in mind while taking inventory of your home's energy use:

Weather

The changing seasons bring changes in energy use. Air conditioners and fans run more often on hot, humid summer days. And cold, blustery winter nights make furnaces run longer to maintain adequate heat.



Change in lifestyles

When the number of people within your household increases, your energy use increases as well. Additional use of lights, kitchen appliances, showers, washers and dryers, TVs, stereos, computers and other appliances can easily increase energy use.

Appliances

Adding a second refrigerator, freezer, hot tub, waterbed or other electrical appliance will also increase your electric use. The use of construction tools (saws, drills, electric lights, sanders, etc.) when remodeling a home can also increase electric use.

Vacations can fool you

Vacations don't necessarily save you money on your electricity. Even though you're away, your refrigerator, freezer, furnace/air conditioner are still running. Depending on the billing cycle, decreased use of the range, toaster and iron could spread over two bills. And don't forget you may have used extra energy getting ready for vacation, such as extra laundry.

Number of days in billing cycle

Sometimes energy use can seem higher due to the number of days in the billing cycle. Keep this in mind when comparing bills from previous months.

Analyzing your energy use

1.) When your energy use seems high, ask yourself about any changes in weather, living habits, appliance use and the billing cycle.

2.) Compare your use to your use a year ago, but remember that weather conditions vary from year to year,

so February's weather this year is not necessarily the same weather experienced in February of last year.

3.) Still think the energy use is more than it should be?

Try this test:

Shut off all the breakers in the house, and then check the meter. The meter should completely stop turning. If it continues to turn, you may have a short between the meter and the breaker box. If so, call an electrician to locate the problem for you.

If the meter stopped when the breakers were completely shut off, then turn on one breaker at a time and check the revolutions of the meter in a 30-second time period. This will allow you to identify the largest electric loads by breaker.

4.) You also may want to monitor your use, along with monitoring activities such as doing laundry or using the oven. Create a spreadsheet that monitors the items below. This will help you see what activities create the highest amount of energy use.

	Reading	Daily Use	Activities
Day 1			
Day 2			
Day 3			
Day 4			
Day 5			
Day 6			
Day 7			
Total			

5.) It also can be helpful to learn just how many kilowatt-hours are being used by each appliance during the month. They can add up quickly. You can figure the use of any home appliance if you know its wattage (or amps) and time of use. A Kill-a-Watt meter can be signed out from Mid-Ohio Energy to make this process easy.

Here's how you calculate use:

a) Convert amps to watts: $\text{amps} \times 120 \text{ volts} = \text{watts}$ (skip this step if you already know the wattage)

b) $\text{Watts} \times \text{hours used per month} = \text{watt-hours per month}$

c) $\text{Watt-hours divided by } 1,000 = \text{kilowatt-hours (kWh)}$ (Example: If you use a 100-watt light bulb for 10 hours you would use 1 kWh.)



ACRE: Your opportunity to make a difference

In May, members were mailed a check for their annual share of capital patronage. The check served as a reminder of the benefits of being a member-owner with a stake in the electric service you receive. Along with this check, members also received a letter asking them to invest a portion of their capital patronage back into the cooperative by becoming a member of ACRE Co-op Owners for Political Action® (COPA). COPA is the political action committee of cooperatives nationwide. Funds go to support candidates who will act to ensure affordable and reliable electric.

We would like to recognize and thank members who have supported cooperatives by becoming a member of COPA. Thanks to your support Mid-Ohio Energy was named ACRE Co-op of the Year in 2008. If you aren't a member, we invite you to join more than 30,000 members nationwide who have taken action to represent electric cooperatives.

To join, fill out the application on this page and return to our offices. If you would like more information, please call our offices.

Peak Alerts

Help your cooperative (and yourself) save money

Along with July comes the beginning of the "dog days of summer," generally some of the hottest days of the year. Not only are they uncomfortable, they can be expensive to you and your electric cooperative.

Rates your cooperative pay for the power it delivers to your home are based, in part, on the peak hours of energy use each year.

These peak hours are set in conjunction with the entire area served by the PJM regional transmission organization, which encompasses most of Ohio along with 12 other states and Washington, D.C.



Radio-controlled switches help avoid costly system peaks.

Your cooperative offers rebates for new geothermal units, air-to-air heat pumps and water heaters installed with a radio-controlled switch (RCS). RCS are designed to reduce overall use by deferring power until after a Peak Alert period. If you currently have a RCS installed on one of these units, a peak can be identified when the red light in the left side of the switch is on.

Times for peak energy use are generally going to be weekdays between 1 and 6 p.m. during the hottest days of the summer. The less electricity your cooperative uses during these peak hours means less impact on rates.

Peaks are based on the entire region, so the co-op may send notice of a possible peak on a mild day here at home when conditions in other parts of the region are pushing demand for electricity.

When you hear a Peak Alert issued, do your part and help "Beat the Peak!"

ACRE Co-op Owners
for Political Action®

Authorization Form

Yes! I want to help keep the voice of rural electric cooperatives heard in the state and national political process by participating in ACRE. Please add the following amount to my monthly electric bill:

- Regular ACRE Member: \$2.08/month (\$25/year)
- Regular ACRE Member: \$8.03/month (\$100/year)
- Other: \$ _____

I affirm that my contribution has been made with non-corporate funds:

Name: _____

Address: _____

Account #: _____

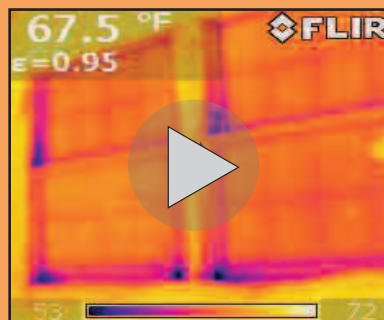
Signature: _____

Return to Mid-Ohio Energy Cooperative, P.O. Box 224, Kenton, OH 43326-0224

www.midohioenergy.com

WATCH ONLINE...

Putting energy efficiency programs to use



Mid-Ohio Energy recently created a video to help share the benefits of our energy efficiency programs. The video was originally shown at our annual meeting in April, and has been posted online for members to view.

The video shows a home energy audit being performed and demonstrates use of the Kill-a-Watt meter to monitor electric use. Watch to find solutions for eliminating air leaks as well as "phantom" energy used by devices that draw power even after being turned off.

To view the informational video, go to www.midohioenergy.com. The video can be viewed on our home page or by selecting "Home Energy Audits" under the Marketing Programs tab.



LETTERS FROM MEMBERS

I want to thank you for the capital patronage check you sent me. It really came in handy. I really appreciate Mid-Ohio Energy Cooperative. If my power is off, it's not very long until it's back on.

*Thanks again,
Mary E. Robinson*

I would like to take this time to thank you for the generous scholarship. It will be put to good use as I further my education at The Ohio State University. Your continued support of the youth of Hardin County is greatly appreciated.

*Thanks again,
Adam Beverly*

I just wanted to say thanks to everyone at Mid-Ohio Energy. I really appreciate the scholarship and the chance to go down to Columbus! I plan to use the money for books.

*Thanks again,
Autumn Klingler*

I want to thank you for the capital credit check that I received in the mail. The money will be put to use very well.

*Thanks again,
Phoebe Clapper*



**MID-OHIO ENERGY COOPERATIVE
WILL BE CLOSED
MONDAY, JULY 4TH,
TO CELEBRATE OUR NATION'S
INDEPENDENCE.**

Emergency service is available 24 hours a day. In the event of an outage, please call our outage hotline at 1-888-363-6446.



Energy Efficiency

Tip of the Month

Consider using solar lights for outdoor lighting. Solar cells convert sunlight into electricity that can be stored in a battery and tapped at night to make light. Check manufacturers' instructions to make sure your solar lights are situated to receive sufficient sunlight to recharge each day.

Source: U.S. Department of Energy

SCHOLARSHIP WINNERS COMPETE IN COLUMBUS



Winners of Mid-Ohio Energy Cooperative's 2011 Children of Consumers scholarships Autumn Klingler (girls division) and John Dulin (boys division) traveled to Columbus to represent Mid-Ohio Energy in a statewide scholarship competition hosted by Ohio Rural Electric Cooperatives.

NEW MEMBERS FOR FEBRUARY 2011

Katherine Ashbrook
Chantelle Brumfield
Amanda S. Callahan
Kelly Creviston
Valerie J. Dailey
Edward K. Daniels
Beth Dunn
Rodney Dysert
Brandon A. Fields
Eric T. Fout
Iris Fox
Tyler Gibson
Marlene A. Harder
Loren G. Helms III
John Kinstle
Terri L. Koons

Randy J. Kramer
Fred Ledesma
Ryan Noe
Kate Nungester
Greg Price
Tiffaney J. Ralston
Sean Risner
Gerald Robinson
Brandy Ross
Derek G. Shuler
Alishea Smith
Rick Spears
Brian D. Swartz
Christopher Todd
Jerry A. Witzel
Zimmerman Realty